



ELECTRONIC COPY

LABORATORY GROWN DIAMOND REPORT

LG701509262
Report verification at igi.org

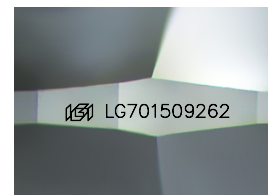
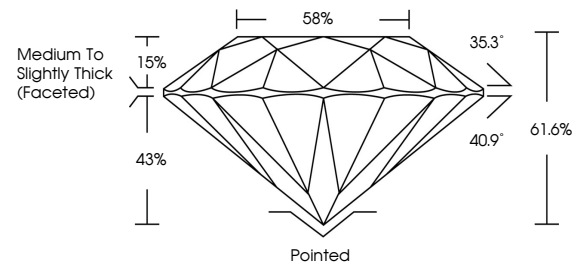
April 29, 2025	
IGI Report Number	LG701509262
Description	LABORATORY GROWN DIAMOND
Shape and Cutting Style	ROUND BRILLIANT
Measurements	7.85 - 7.89 X 4.85 MM
GRADING RESULTS	
Carat Weight	1.85 CARAT
Color Grade	D
Clarity Grade	VS 1
Cut Grade	IDEAL

ADDITIONAL GRADING INFORMATION

Polish	EXCELLENT
Symmetry	EXCELLENT
Fluorescence	NONE
Inscription(s)	 LG701509262

Comments: This Laboratory Grown Diamond was created by Chemical Vapor Deposition (CVD) growth process.
Type IIa

PROPORTIONS



Sample Image Used

COLOR

D E F G H I J Faint Very Light Light

CLARITY

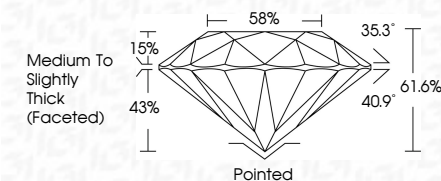
IF VS¹⁻² VS¹⁻² S¹⁻² |¹⁻³

Internally Flawless	Very Very Slightly Included	Very Slightly Included	Slightly Included	Included
------------------------	--------------------------------	---------------------------	----------------------	----------

LABORATORY GROWN DIAMOND REPORT



April 29, 2025	
IGI Report Number	LG701509262
Description	LABORATORY GROWN DIAMOND
Shape and Cutting Style	ROUND BRILLIANT
Measurements	7.85 - 7.89 X 4.85 MM
GRADING RESULTS	
Carat Weight	1.85 CARAT
Color Grade	D
Clarity Grade	VS 1
Cut Grade	IDEAL



ADDITIONAL GRADING INFORMATION

Polish	EXCELLENT
Symmetry	EXCELLENT
Fluorescence	NONE
Inscription(s)	 LG701509262
<p>Comments: This Laboratory Grown Diamond was created by Chemical Vapor Deposition (CVD) growth process.</p> <p>Type IIa</p>	



© IGI 2020, International Gemological Institute

FD - 10 20



THIS DOCUMENT WAS PRODUCED WITH THE FOLLOWING SECURITY MEASURES: SPECIAL DOCUMENT PAPER, INK SCREENS, WATERMARK, BACKGROUND DESIGNS, HOLOGRAM, AND OTHER SECURITY FEATURES NOT LISTED AND DO EXCEED DOCUMENT SECURITY INDUSTRY GUIDELINES.

www.igi.org

April 29, 2025
ICI Report No LG701509262
ROUND BRILLIANT

	1.85 CARAT	
	D	
	VS 1	
	IDEAL	
	61.0%	
	58%	
	Medium to Slightly Thick (Faceted)	
	Pointed	
	EXCELLENT	
1.85 - 7.99 X 4.85 MM		
	Carat Weight	
	Color Grade	
	Clarity Grade	
	Cut Grade	
	Depth	
	Table	
	Girdle	
	Culet	
	Polish	
1.85 - 7.99 X 4.85 MM		
	Symmetry	
	Fluorescence	
	None	
	None	
	None	
	None	
	None	
	None	
	None	
1.85 - 7.99 X 4.85 MM		

Comments:
This Laboratory Grown Diamond was
created by Chemical Vapor Deposition
(CVD) growth process.