

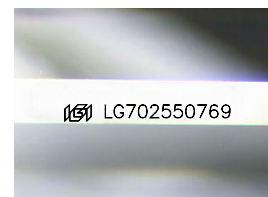
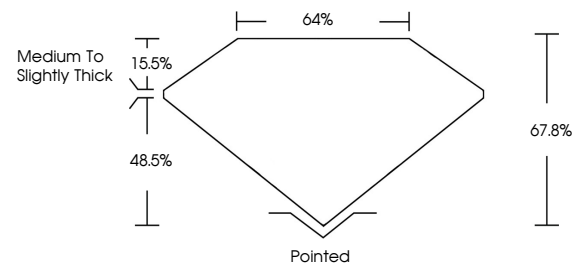


**ELECTRONIC COPY**

## LABORATORY GROWN DIAMOND REPORT

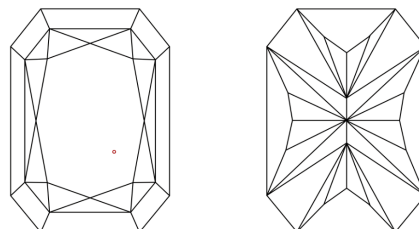
LG702550769  
Report verification at [igi.org](https://igi.org)

## PROPORTIONS



Sample Image Used

## CLARITY CHARACTERISTICS



### KEY TO SYMBOLS

Red symbols indicate internal characteristics.  
Green symbols indicate external characteristics.

## COLOR

D E F G H I J Faint Very Light Light

## CLARITY

IF	VS <sup>1-2</sup>	VS <sup>1-2</sup>	SI <sup>1-2</sup>	I <sup>1-3</sup>
Internally Flawless	Very Very Slightly Included	Very Slightly Included	Slightly Included	Included

## LABORATORY GROWN DIAMOND REPORT



April 26, 2025

IGI Report Number **LG702550769**Description **LABORATORY GROWN DIAMOND**

Shape and Cutting Style

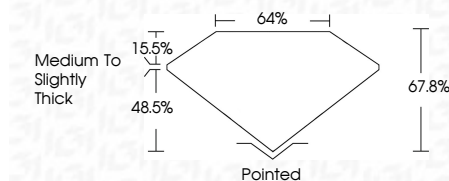
Measurements **9.15 X 6.14 X 4.16 MM**

## GRADING RESULTS

Carat Weight **2.01 CARATS**

Color Grade D

Clarity Grade VS 1



### ADDITIONAL GRADING INFORMATION

Polish **EXCELLENT**Symmetry **EXCELLENT**Fluorescence **NONE**Inscription(s)  LG702550769

Comments: This Laboratory Grown Diamond was created by Chemical Vapor Deposition (CVD) growth process.  
Type IIa



© IGI 2020, International Gemological Institute

FD - 10 20

**www.igi.org**

THIS DOCUMENT WAS PRODUCED WITH THE FOLLOWING SECURITY MEASURES: SPECIAL DOCUMENT PAPER, INK SCREENS, WATERMARK BACKGROUND DESIGNS, HOLOGRAM AND OTHER SECURITY FEATURES NOT LISTED AND DO EXCEED DOCUMENT SECURITY INDUSTRY GUIDELINES

April 24, 2005	CG Report No. LG70550749	2.01 CARATS	VSI 1	Polished	EXCELLENT	NONE	Comments: This is a Crown Diamond was created by Chemical Vapor Deposition (CVD) growth process. type IIG
CG CORNBED RECT. MODIFIED BRILLIANT	15 X 16 X 14 X 14 X 16 MM	Color Grade	VS 1	Medium to slightly Thick	EXCELLENT	681LE70550749	
		Carat Weight	67.6%				
		Color Grade	64%				
		Clarity Grade	Medium to slightly Thick				