

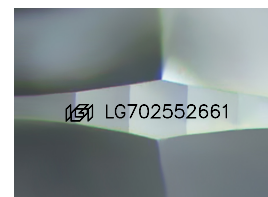
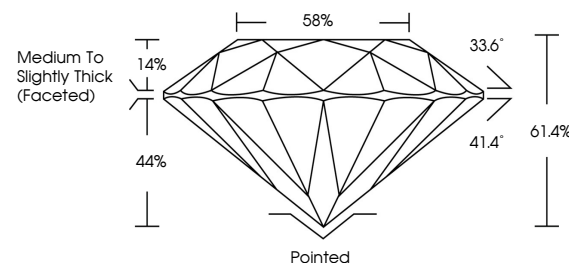


**ELECTRONIC COPY**

## LABORATORY GROWN DIAMOND REPORT

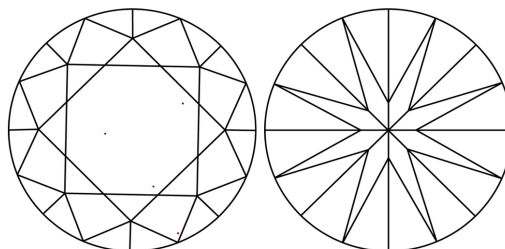
LG702552661  
Report verification at [igi.org](https://igi.org)

## PROPORTIONS



Sample Image Used

## CLARITY CHARACTERISTICS



## KEY TO SYMBOLS

Red symbols indicate internal characteristics.  
Green symbols indicate external characteristics.

## COLOR

D E F G H I J Faint Very Light Light

## CLARITY

IF WS<sup>1-2</sup> VS<sup>1-2</sup> SI<sup>1-2</sup> |<sup>1-3</sup>

Internally Flawless	Very Very Slightly Included	Very Slightly Included	Slightly Included	Included
------------------------	--------------------------------	---------------------------	----------------------	----------



© IGI 2020, International Gemological Institute

FD - 10 20

**www.igi.org**

## LABORATORY GROWN DIAMOND REPORT



April 26, 2025

IGI Report Number **LG702552661**Description **LABORATORY GROWN DIAMOND**Shape and Cutting Style **ROUND BRILLIANT**

Measurements 10.27 - 10.31 X 6.31 MM

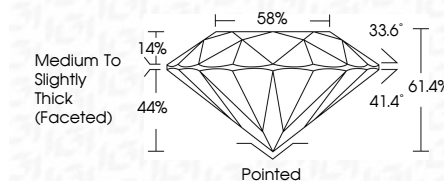
## GRADING RESULTS

Carat Weight **4.05 CARATS**

Color Grade

Clarity Grade WS 2

Cut Grade **IDEAL**



### ADDITIONAL GRADING INFORMATION

Polish **EXCELLENT**Symmetry **EXCELLENT**Fluorescence **NONE**Inscription(s)  LG702552661

Comments: This Laboratory Grown Diamond was created by Chemical Vapor Deposition (CVD) growth process.  
Type IIa



April 24, 2025	405 CARATS	W6 2	Painted
G Report No. LG70252661		IDEAL	EXCELLENT
ROUND BRILLIANT		61.4%	EXCELLENT
		88%	NONE
		Medium to Slightly Thick Facet(s)	(#) LG70252661
10.27 - 10.31 X 6.31 MM			
Color Weight			
Color Grade			
Clarity Grade			
Cut Grade			
Depth			
Table			
Girdle			
Culet			
Polish			
Symmetry			
Fluorescence			
Facet(s)			
Comments:			
The Laboratory Grown Diamond was created by Chemical Vapor Deposition (CVD) growth process.			
Type IIA			