

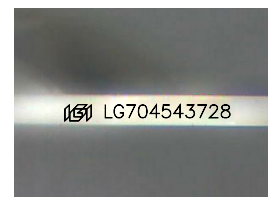
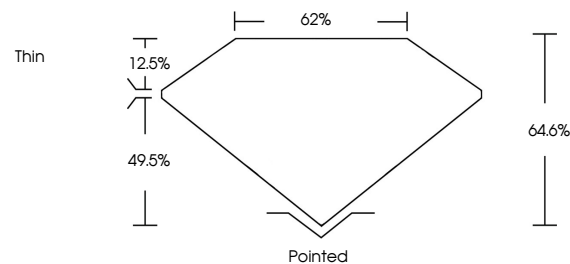


ELECTRONIC COPY

LABORATORY GROWN DIAMOND REPORT

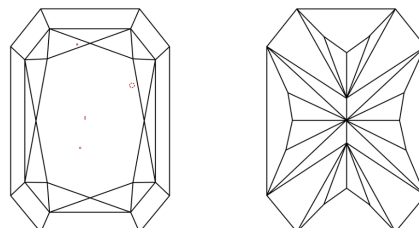
LG704543728
Report verification at lgi.org

PROPORTIONS



Sample Image Used

CLARITY CHARACTERISTICS



KEY TO SYMBOLS

Red symbols indicate internal characteristics.
Green symbols indicate external characteristics.

COLOR

D E F G H I J Faint Very Light Light

CLARITY

IF VWS¹⁻² VS¹⁻² SI¹⁻² I¹⁻³

| | | | | |
|------------------------|--------------------------------|---------------------------|----------------------|----------|
| Internally Flawless | Very Very Slightly Included | Very Slightly Included | Slightly Included | Included |
|------------------------|--------------------------------|---------------------------|----------------------|----------|



© IGI 2020, International Gemological Institute

FD - 10 20

www.igi.org

LABORATORY GROWN DIAMOND REPORT



May 13, 2025

IGI Report Number **LG704543728**Description **LABORATORY GROWN DIAMOND**

Shape and Cutting Style

Measurements 7.56 X 5.06 X 3.27 MM

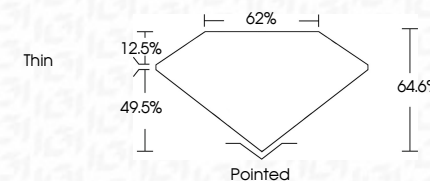
GRADING RESULTS

Carat Weight 1.08 CARAT

Color Grade

Clarity Grade VS 1

Cut Grade **EXCELLENT**



ADDITIONAL GRADING INFORMATION

Polish EXCELLENT

Symmetry **EXCELLENT**Fluorescence NONEInscription(s) LG704543728

Comments: This Laboratory Grown Diamond was created by Chemical Vapor Deposition (CVD) growth process.
Type IIa



| | | |
|---|---|--|
| <div>May 13, 2026</div> | GI Report No LG70468728 CUT CORNBED RECT. MODIFIED BRILLIANT | |
| | | |
| 7.56 X 5.08 X 3.27 MM | 1.08 CARAT | |
| Color Weight | D | |
| Color Grade | Vs 1 | |
| Clarity Grade | EXCELNT | |
| Cut Grade | 64.6% | |
| Depth | Grt | |
| Table | Thin | |
| Girdle | Poished | |
| Culet | EXCELNT | |
| Symmetry | EXCELNT | |
| Fluorescence | NONE | |
| Treatment(s) | (#) LG70468728 | |
| Comments: | | |
| The Laboratory Grown Diamond was created by Chemical Vapor Deposition (CVD) growth process. | | |
| Type IIa | | |