



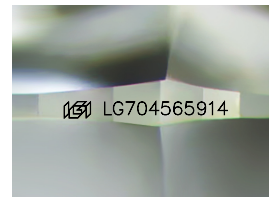
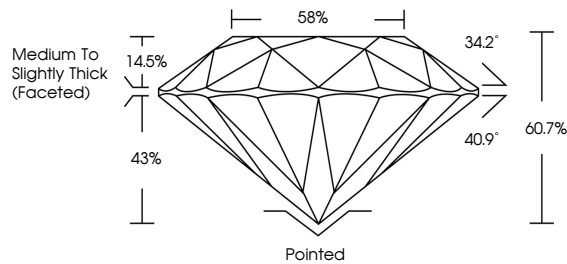
**INTERNATIONAL
GEMOLOGICAL
INSTITUTE**

ELECTRONIC COPY

LABORATORY GROWN DIAMOND REPORT

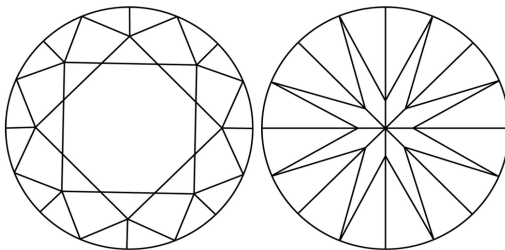
LG704565914
Report verification at igi.org

PROPORTIONS



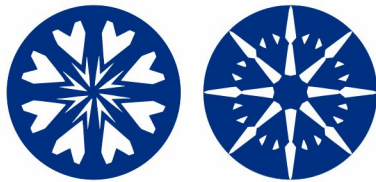
Sample Image Used

CLARITY CHARACTERISTICS



KEY TO SYMBOLS

Red symbols indicate internal characteristics.
Green symbols indicate external characteristics.



www.igi.org

COLOR

D E F G H I J Faint Very Light Light

CLARITY

IF WS¹⁻² VS¹⁻² S¹⁻² 1-3

Internally Flawless	Very Very Slightly Included	Very Slightly Included	Slightly Included	Included
------------------------	--------------------------------	---------------------------	----------------------	----------



© IGI 2020, International Gemological Institute

FD - 10 20

THIS DOCUMENT WAS PRODUCED WITH THE FOLLOWING SECURITY MEASURES: SPECIAL DOCUMENT PAPER, INK SCREENS, WATERMARK, BACKGROUND DESIGNS, HOLOGRAM AND OTHER SECURITY FEATURES NOT LISTED AND DO EXCEED DOCUMENT SECURITY INDUSTRY GUIDELINES

LABORATORY GROWN DIAMOND REPORT



May 2, 2025

IGI Report Number **LG704565914**

Description	LABORATORY GROWN DIAMOND
-------------	--------------------------

Shape and Cutting Style **ROUND BRILLIANT**

Measurements **9.43 - 9.47 X 5.74 MM**

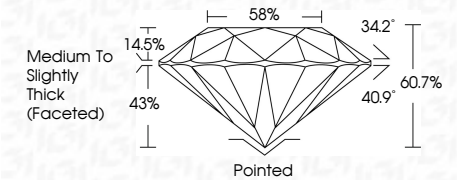
GRADING RESULTS

Carat Weight **3.11 CARATS**

Color Grade **D**

Clarity Grade **INTERNALLY FLAWLESS**

Cut Grade	IDEAL
-----------	-------



ADDITIONAL GRADING INFORMATION

Polish **EXCELLENT**

Symmetry **EXCELLENT**

Fluorescence **NONE**Inscription(s) LG704565914

Comments: HEARTS & ARROWS

As Grown - No indication of post-growth treatment.
This Laboratory Grown Diamond was created by High
Pressure High Temperature (HPHT) growth process.
Type II



IGI

May 2, 2025	IGI Report No LG704656914		ROUND BRILLIANT		3.11 CARATS	
9.48 - 9.47 X 5.74 MM	Color Weight	Color Grade	Clarity Grade	Cut Grade	Depth	60.7%
						68%
					Medium to Slightly Thick (Faceted)	
				Culet	Polished	
				Polish	EXCELLENT	
				Symmetry	EXCELLENT	
				Fluorescence	NONE	
				Inscriptions(s)	IGI LG704656914	
Comments: HEART & ARROWS As Grown - No indication of post-growth treatment. This Laboratory Grown Diamond was produced by the High Pressure High Temperature (HPHT) growth process.						
Type II						