

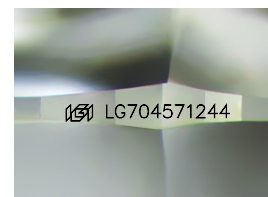
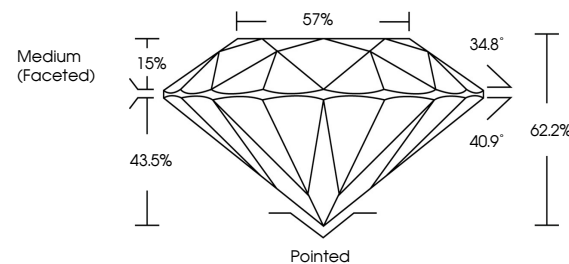


**ELECTRONIC COPY**

## LABORATORY GROWN DIAMOND REPORT

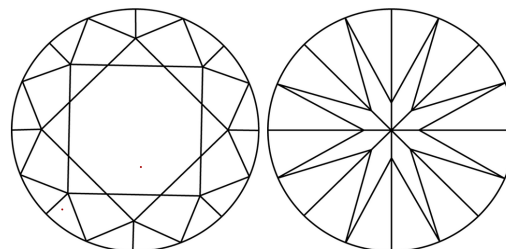
LG704571244  
Report verification at [igi.org](https://igi.org)

## PROPORTIONS



Sample Image Used

## CLARITY CHARACTERISTICS



## KEY TO SYMBOLS

Red symbols indicate internal characteristics.  
Green symbols indicate external characteristics.

## COLOR

D E F G H I J Faint Very Light Light

## CLARITY

IF WS<sup>1-2</sup> VS<sup>1-2</sup> SI<sup>1-2</sup> |<sup>1-3</sup>

Internally Flawless	Very Very Slightly Included	Very Slightly Included	Slightly Included	Included
------------------------	--------------------------------	---------------------------	----------------------	----------



May 6, 2025

IGI Report Number **LG704571244**

Description	LABORATORY GROWN DIAMOND
-------------	--------------------------

Shape and Cutting Style **ROUND BRILLIANT**

Measurements 8.09 - 8.12 X 5.04 MM

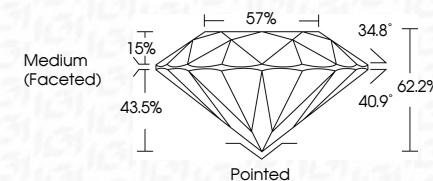
## GRADING RESULTS

Carat Weight **2.04 CARATS**

Color Grade

Clarity Grade WS 2

Cut Grade **IDEAL**



### ADDITIONAL GRADING INFORMATION

Polish EXCELLENT

Symmetry **EXCELLENT**Fluorescence **NONE**Inscription(s)  LG704571244

Comments: This Laboratory Grown Diamond was created by Chemical Vapor Deposition (CVD) growth process.  
Type IIa



© IGI 2020, International Gemological Institute

FD - 10 20



THIS DOCUMENT WAS PRODUCED WITH THE FOLLOWING SECURITY MEASURES: SPECIAL DOCUMENT PAPER, INK SCREENS, WATERMARK, BACKGROUND DESIGNS, HOLOGRAM, AND OTHER SECURITY FEATURES NOT LISTED AND DO EXCEED DOCUMENT SECURITY INDUSTRY GUIDELINES

**www.igi.org**

May 6, 2005	GL Report No. LG704571244	2.04 CARATS
ROUND BRILLIANT		F
10.9 - 12 X 5.04 MM		VVS 2
		IDEAL
		62.2%
		57%
		Medium (Fossilized)
		Polished
		EXCELLENT
		EXCELLENT
		NONE
		#69 LG704571244
<p>Comments:</p> <p>The Laboratory Grown Diamond was          confirmed by Laser Vapor Deposition          (LVD) growth process.          type IIG</p>		