



ELECTRONIC COPY

LG705507211 Report verification at igi.org



May 9, 2025 IGI Report Number LG705507211 Description LABORATORY GROWN DIAMOND Shape and Cutting Style CUT CORNERED RECTANGULAR MODIFIED BRILLIANT Measurements 8.98 X 6.31 X 4.25 MM GRADING RESULTS Carat Weight 2.05 CARATS Color Grade D Clarity Grade SI 1

LABORATORY GROWN DIAMOND REPORT

May 9, 2025 IGI Report Number LG705507211 Description LABORATORY GROWN DIAMOND Shape and Cutting Style CUT CORNERED RECTANGULAR MODIFIED BRILLIANT Measurements 8.98 X 6.31 X 4.25 MM

GRADING RESULTS

Carat Weight 2.05 CARATS Color Grade D Clarity Grade SI 1

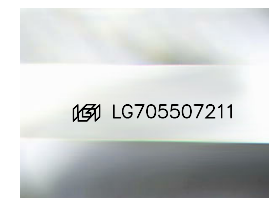
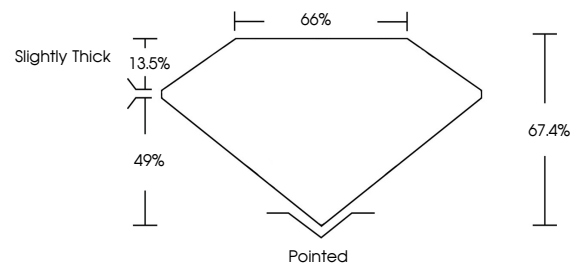
ADDITIONAL GRADING INFORMATION

Polish EXCELLENT Symmetry EXCELLENT Fluorescence NONE

Inscription(s) LG705507211

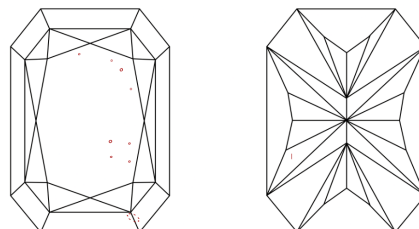
Comments: This Laboratory Grown Diamond was created by Chemical Vapor Deposition (CVD) growth process. Type IIa

PROPORTIONS



Sample Image Used

CLARITY CHARACTERISTICS



KEY TO SYMBOLS

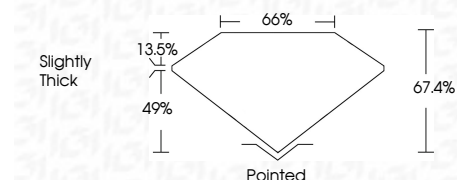
Red symbols indicate internal characteristics. Green symbols indicate external characteristics.

COLOR

D E F G H I J Faint Very Light Light

CLARITY

IF WS 1-2 VS 1-2 SI 1-2 I 1-3 Internally Flawless Very Very Slightly Included Very Slightly Included Slightly Included Included



ADDITIONAL GRADING INFORMATION

Polish EXCELLENT Symmetry EXCELLENT Fluorescence NONE Inscription(s) LG705507211 Comments: This Laboratory Grown Diamond was created by Chemical Vapor Deposition (CVD) growth process. Type IIa



May 9, 2025 IGI Report No LG705507211 CUT CORNERED RECT. MODIFIED BRILLIANT 8.98 X 6.31 X 4.25 MM 2.05 CARATS D 67.4% 49% 13.5% Slightly Thick Pointed EXCELLENT EXCELLENT NONE LG705507211 Comments: This Laboratory Grown Diamond was created by Chemical Vapor Deposition (CVD) growth process. Type IIa