



**ELECTRONIC COPY**

## LABORATORY GROWN DIAMOND REPORT

LG705515164  
Report verification at [igi.org](https://igi.org)

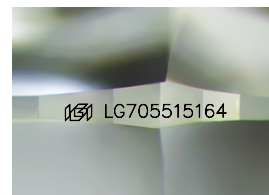
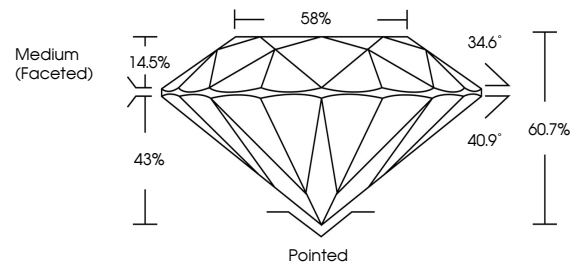
May 3, 2025	
IGI Report Number	LG705515164
Description	LABORATORY GROWN DIAMOND
Shape and Cutting Style	ROUND BRILLIANT
Measurements	7.13 - 7.16 X 4.34 MM
GRADING RESULTS	
Carat Weight	1.35 CARAT
Color Grade	D
Clarity Grade	VVS 2
Cut Grade	IDEAL

### ADDITIONAL GRADING INFORMATION

Polish	EXCELLENT
Symmetry	EXCELLENT
Fluorescence	NONE
Inscription(s)	15 LG705515164

Comments: This Laboratory Grown Diamond was created by Chemical Vapor Deposition (CVD) growth process.  
Type IIa

## PROPORTIONS



Sample Image Used

## COLOR

D E F G H I J Faint Very Light Light

## CLARITY

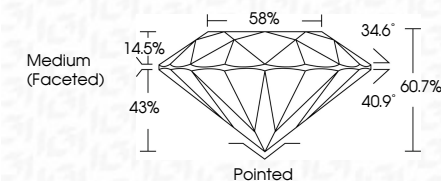
IF                      VS<sup>1-2</sup>                      VS<sup>1-2</sup>                      S<sup>1-2</sup>                      |<sup>1-3</sup>

Internally Flawless	Very Very Slightly Included	Very Slightly Included	Slightly Included	Included
---------------------	-----------------------------	------------------------	-------------------	----------

## LABORATORY GROWN DIAMOND REPORT



May 3, 2025	
IGI Report Number	LG705515164
Description	LABORATORY GROWN DIAMOND
Shape and Cutting Style	ROUND BRILLIANT
Measurements	7.13 - 7.16 X 4.34 MM
GRADING RESULTS	
Carat Weight	1.35 CARAT
Color Grade	D
Clarity Grade	VVS 2
Cut Grade	IDEAL



### ADDITIONAL GRADING INFORMATION

Polish	EXCELLENT
Symmetry	EXCELLENT
Fluorescence	NONE
Inscription(s)	 LG705515164
Comments: This Laboratory Grown Diamond was created by Chemical Vapor Deposition (CVD) growth process.	
Type IIa	



© IGI 2020, International Gemological Institute

FD - 10 20



THIS DOCUMENT WAS PRODUCED WITH THE FOLLOWING SECURITY MEASURES: SPECIAL DOCUMENT PAPER, INK SCREENS, WATERMARK, BACKGROUND DESIGNS, HOLOGRAM, AND OTHER SECURITY FEATURES NOT LISTED AND DO EXCEED DOCUMENT SECURITY INDUSTRY GUIDELINES

**www.igi.org**

May 3, 2025  
GI Report No LG705515164  
ROUND BRILLIANT

ROUND BRILLIANT	7.13 - 7.16 X 4.34 MM	1.35 CARAT
	Color Weight	D
	Color Grade	VVS2
	Clarity Grade	IDEAL
	Out Grade	60.7%
	Depth	58%
	Table	Medium (Faceted)
	Girdle	

Pointed	EXCELLENT	EXCELLENT	NONE
Culet			
Polish			
Symmetry			
Fluorescence			
Coloration (c)			

**Comments:**  
This Laboratory Grown Diamond was  
created by Chemical Vapor Deposition  
(CVD) growth process.