



INTERNATIONAL GEMOLOGICAL INSTITUTE

ELECTRONIC COPY

LABORATORY GROWN DIAMOND REPORT

May 14, 2025
IGI Report Number **LG705523766**
Description **LABORATORY GROWN DIAMOND**
Shape and Cutting Style **OVAL BRILLIANT**
Measurements **6.84 X 4.60 X 2.77 MM**

GRADING RESULTS

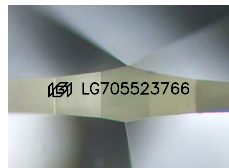
Carat Weight **0.56 CARAT**
Color Grade **FANCY PINK**
Clarity Grade **VVS 2**

ADDITIONAL GRADING INFORMATION

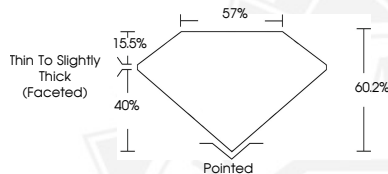
Polish **GOOD**
Symmetry **GOOD**
Fluorescence **SLIGHT**
Inscription(s) **IGI LG705523766**

Comments: This Laboratory Grown Diamond was created by Chemical Vapor Deposition (CVD) growth process. Indications of post-growth treatment.

Secondary color: Brown



Sample Image Used



May 14, 2025
IGI Report Number **LG705523766**
OVAL BRILLIANT
LABORATORY GROWN DIAMOND
6.84 X 4.60 X 2.77 MM
Carat Weight **0.56 CARAT**
Color Grade **FANCY PINK**
Clarity Grade **VVS 2**
Polish **GOOD**
Symmetry **GOOD**
Fluorescence **SLIGHT**
Inscription(s) **IGI LG705523766**

Comments: This Laboratory Grown Diamond was created by Chemical Vapor Deposition (CVD) growth process. Indications of post-growth treatment. Secondary color: Brown



May 14, 2025
IGI Report Number **LG705523766**
OVAL BRILLIANT
LABORATORY GROWN DIAMOND
6.84 X 4.60 X 2.77 MM
Carat Weight **0.56 CARAT**
Color Grade **FANCY PINK**
Clarity Grade **VVS 2**
Polish **GOOD**
Symmetry **GOOD**
Fluorescence **SLIGHT**
Inscription(s) **IGI LG705523766**

Comments: This Laboratory Grown Diamond was created by Chemical Vapor Deposition (CVD) growth process. Indications of post-growth treatment. Secondary color: Brown



THIS DOCUMENT WAS PRODUCED WITH THE FOLLOWING SECURITY MEASURES: SPECIAL DOCUMENT PAPER, INK SCREENS, WATERMARK, BACKGROUND DESIGNS, HOLOGRAM AND OTHER SECURITY FEATURES NOT LISTED AND DO EXCEED DOCUMENT SECURITY INDUSTRY GUIDELINES.

For terms & conditions and to verify this report, please visit www.igi.org