

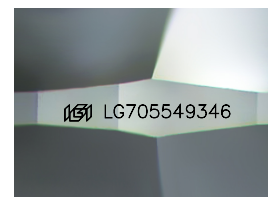
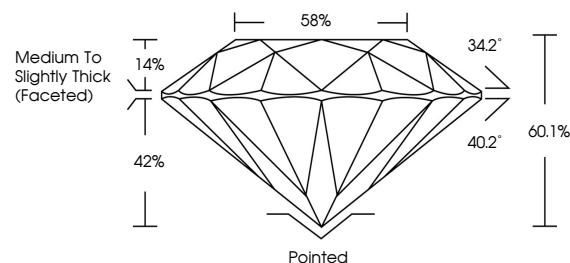


ELECTRONIC COPY

LABORATORY GROWN DIAMOND REPORT

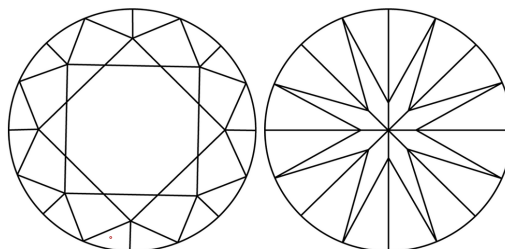
LG705549346
Report verification at igi.org

PROPORTIONS



Sample Image Used

CLARITY CHARACTERISTICS



KEY TO SYMBOLS

Red symbols indicate internal characteristics.
Green symbols indicate external characteristics.

COLOR

D E F G H I J Faint Very Light Light

CLARITY

IF WS¹⁻² VS¹⁻² SI¹⁻² |¹⁻³

Internally Flawless	Very Very Slightly Included	Very Slightly Included	Slightly Included	Included
------------------------	--------------------------------	---------------------------	----------------------	----------



May 16, 2025

IGI Report Number **LG705549346**Description **LABORATORY GROWN DIAMOND**Shape and Cutting Style **ROUND BRILLIANT**

Measurements 6.63 - 6.66 X 3.99 MM

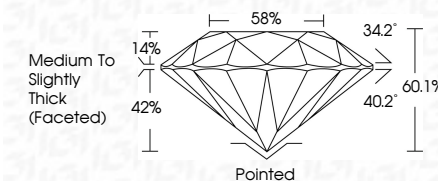
GRADING RESULTS

Carat Weight 1.09 CARAT

Color Grade D

Clarity Grade VVS 2

Cut Grade **IDEAL**



ADDITIONAL GRADING INFORMATION

Polish EXCELLENT

Symmetry **EXCELLENT**Fluorescence **NONE**Inscription(s) LG705549346

Comments: This Laboratory Grown Diamond was created by Chemical Vapor Deposition (CVD) growth process.
Type IIa



© IGI 2020, International Gemological Institute

FD - 10 20

www.igi.org



THIS DOCUMENT WAS PRODUCED WITH THE FOLLOWING SECURITY MEASURES: SPECIAL DOCUMENT PAPER, INK SCREENS, WATERMARK, BACKGROUND DESIGNS, HOLOGRAM AND OTHER SECURITY FEATURES NOT LISTED AND DO EXCEED DOCUMENT SECURITY INDUSTRY GUIDELINES

May 14, 2005	Color Weight	1.07 CARAT
Q Report No. L2705549346	Color Grade	D
ROUND BRILLIANT	Clarity Grade	VVS 2
4.63 - 4.66 x 5.97 MM	Car Grade	IDEAL
	Depth	61.1%
	Table	58%
	Side Grade	Medium to Slightly Thick (Faced)
	Culet	Pointed
	Polish	EXCELLENT
	Symmetry	EXCELLENT
	Fluorescence	NONE
	Inscriptions(s)	#91 L2705549346
Comments:		
Created by: Crown Diamond usa		
Created by: Chemical Vapor Deposition		
CVD growth process.		
Type IIG		