

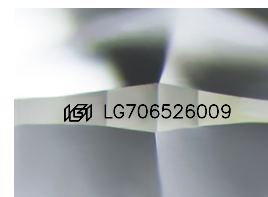
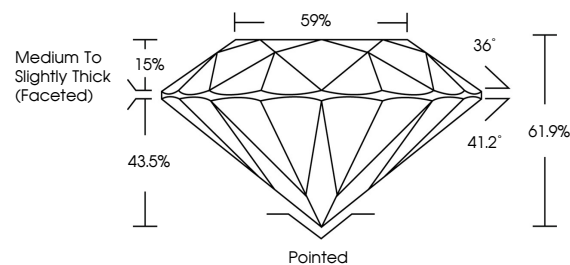


ELECTRONIC COPY

LABORATORY GROWN DIAMOND REPORT

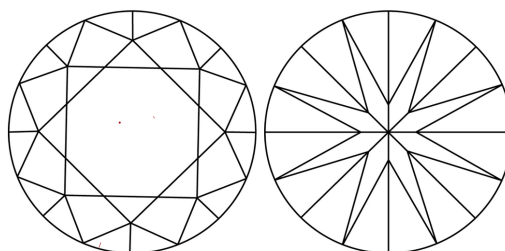
LG706526009
Report verification at igi.org

PROPORTIONS



Sample Image Used

CLARITY CHARACTERISTICS



KEY TO SYMBOLS

Red symbols indicate internal characteristics.
Green symbols indicate external characteristics.

COLOR

D E F G H I J Faint Very Light Light

CLARITY

IF WS¹⁻² VS¹⁻² SI¹⁻² |¹⁻³

Internally Flawless	Very Very Slightly Included	Very Slightly Included	Slightly Included	Included
------------------------	--------------------------------	---------------------------	----------------------	----------

LABORATORY GROWN DIAMOND REPORT



May 13, 2025

IGI Report Number **LG706526009**Description **LABORATORY GROWN DIAMOND**Shape and Cutting Style **ROUND BRILLIANT**

Measurements 10.26 - 10.31 X 6.36 MM

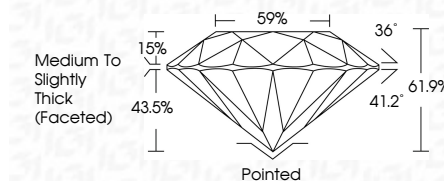
GRADING RESULTS

Carat Weight 4.09 CARATS

Color Grade

Clarity Grade VS 1

Cut Grade **IDEAL**



ADDITIONAL GRADING INFORMATION

Polish EXCELLENT

Symmetry **EXCELLENT**Fluorescence **NONE**Inscription(s) LG706526009

Comments: This Laboratory Grown Diamond was created by Chemical Vapor Deposition (CVD) growth process.
Type IIa



© IGI 2020, International Gemological Institute

FD - 10 20

www.igi.org



THIS DOCUMENT WAS PRODUCED WITH THE FOLLOWING SECURITY MEASURES: SPECIAL DOCUMENT PAPER, INK SCREENS, WATERMARK, BACKGROUND DESIGNS, HOLOGRAM AND OTHER SECURITY FEATURES NOT LISTED AND DO EXCEED DOCUMENT SECURITY INDUSTRY GUIDELINE

May 19, 2025	Report No. 1707562009	409 CARATS	F	VS 1	IDEAL	61.9%	59%	Medium to Slightly Thick (Focused)	Pointed	Excellent	Excellent	NONE	16916707062009	Comments: The laboratory has examined the diamond and found it to be a natural, colorless, brilliant, round brilliant cut diamond with a weight of 409 carats, VS1 clarity, ideal cut, and excellent fluorescence. The diamond is of excellent quality and is highly recommended for use in jewelry.
Report No. 1707562009	ROUND BRILLIANT	10.026 - 10.31 X 5.36 MM	Carat Weight	Color Grade	Clarity Grade	Cut Grade	Depth	Table	Girdle	Culet	Polish	Symmetry	Fluorescence	Inscriptions(s)