



**ELECTRONIC COPY**

## LABORATORY GROWN DIAMOND REPORT

LG706532057  
Report verification at [igi.org](https://igi.org)

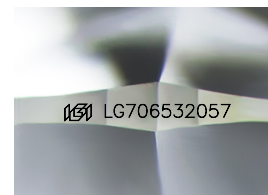
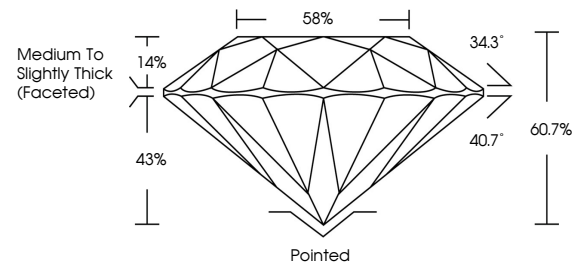
May 14, 2025	
IGI Report Number	LG706532057
Description	LABORATORY GROWN DIAMOND
Shape and Cutting Style	ROUND BRILLIANT
Measurements	10.25 - 10.30 X 6.24 MM
GRADING RESULTS	
Carat Weight	4.02 CARATS
Color Grade	D
Clarity Grade	VS 1
Cut Grade	IDEAL

### ADDITIONAL GRADING INFORMATION

Polish	EXCELLENT
Symmetry	EXCELLENT
Fluorescence	NONE
Inscription(s)	 LG706532057

Comments: As Grown - No indication of post-growth treatment.  
This Laboratory Grown Diamond was created by High Pressure High Temperature (HPHT) growth process.  
Type II

## PROPORTIONS



Sample Image Used

**COLOR**

D E F G H I J Faint Very Light Light

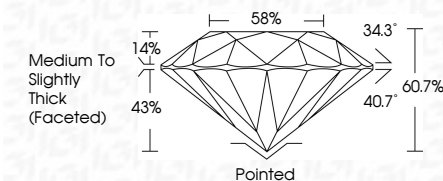
## CLARITY

IF	VS <sup>1-2</sup>	VS <sup>1-2</sup>	SI <sup>1-2</sup>	I <sup>1-3</sup>
Internally Flawless	Very Very Slightly Included	Very Slightly Included	Slightly Included	Included

## LABORATORY GROWN DIAMOND REPORT



May 14, 2025	
IGI Report Number	LG706532057
Description	LABORATORY GROWN DIAMOND
Shape and Cutting Style	ROUND BRILLIANT
Measurements	10.25 - 10.30 X 6.24 MM
GRADING RESULTS	
Carat Weight	4.02 CARATS
Color Grade	D
Clarity Grade	VS 1
Cut Grade	IDEAL



### ADDITIONAL GRADING INFORMATION

Polish	EXCELLENT
Symmetry	EXCELLENT
Fluorescence	NONE
Inscription(s)	<del>(G)</del> LG706632057
Comments: As Grown - No indication of post-growth treatment.	
This Laboratory Grown Diamond was created by High Pressure High Temperature (HPHT) growth process.	
Type II	



© IGI 2020, International Gemological Institute

FD - 10 20



THIS DOCUMENT WAS PRODUCED WITH THE FOLLOWING SECURITY MEASURES: SPECIAL DOCUMENT PAPER, INK SCREENS, WATERMARK, BACKGROUND DESIGNS, HOLOGRAM AND OTHER SECURITY FEATURES NOT LISTED AND DO EXCEED DOCUMENT SECURITY INDUSTRY GUIDELINES

**www.igi.org**

May 14, 2025  
GJ Report No | G706532057

IGI Report No LG70  
DOING BRILLIANT

ROUND BRILLIANT  
10.25 - 10.30 X 6.24 MM

10.25 - 10.30 X 6.24 MM  
Carat Weight  
4.02 CARATS

**D**

Color Grade

Clarity Grade

Depth	Cut Grade	IDEAL	40-70%
-------	-----------	-------	--------

Dep. III	60.7%
Table	58%

Girdle

1111X (revised)

Country	Polished	Pointed
Cuba	EXCELLENT	Pointed
Polish	EXCELLENT	Pointed

Symmetry

Fluorescence	None
Inscription(s)	1881   G706532067

[illegible]

Comments:  
As Grown - No Indication of post-growth

**treatment.**  
This Laboratory Grown Diamond was

created by High Pressure High Temperature (HPHT) growth process.

Type II