

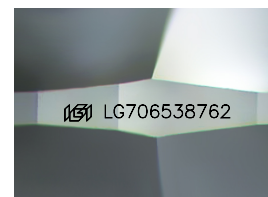
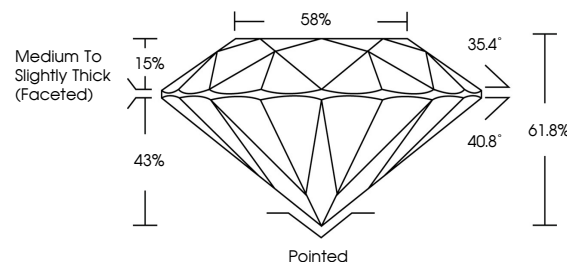


**ELECTRONIC COPY**

## LABORATORY GROWN DIAMOND REPORT

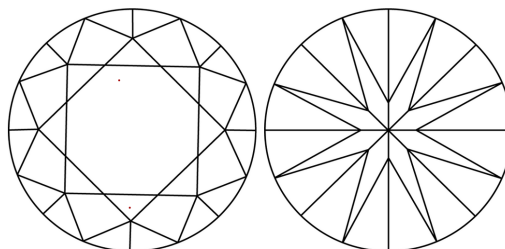
LG706538762  
Report verification at [lgi.org](https://lgi.org)

## PROPORTIONS



Sample Image Used

## CLARITY CHARACTERISTICS



## KEY TO SYMBOLS

Red symbols indicate internal characteristics.  
Green symbols indicate external characteristics.

## COLOR

D E F G H I J Faint Very Light Light

## CLARITY

IF WS<sup>1-2</sup> VS<sup>1-2</sup> SI<sup>1-2</sup> |<sup>1-3</sup>

Internally Flawless	Very Very Slightly Included	Very Slightly Included	Slightly Included	Included
------------------------	--------------------------------	---------------------------	----------------------	----------

## LABORATORY GROWN DIAMOND REPORT



May 20, 2025

IGI Report Number **LG706538762**Description **LABORATORY GROWN DIAMOND**Shape and Cutting Style **ROUND BRILLIANT**

Measurements 8.76 - 8.79 X 5.43 MM

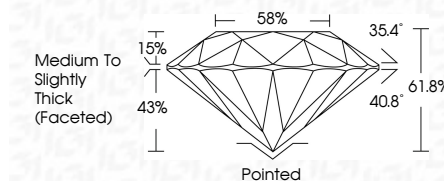
## GRADING RESULTS

Carat Weight **2.59 CARATS**

Color Grade F

Clarity Grade WS 2

Cut Grade **IDEAL**



### ADDITIONAL GRADING INFORMATION

Polish **EXCELLENT**Symmetry **EXCELLENT**Fluorescence **NONE**Inscription(s)  LG706538762

Comments: This Laboratory Grown Diamond was created by Chemical Vapor Deposition (CVD) growth process.

Type IIa



May 20, 2025	Color Weight	2.89 CARATS
Report No. LG7045387/2	Color Grade	F
ROUND BRILLIANT	Clarity Grade	VS 2
6.74 - 6.79 X 5.43 MM	Clarity Grade	IDEAL
	Depth	61.8%
	Table	59%
	Grade	Medium To Slightly Thick (checked)
	Culet	Pointed
	Polish	EXCELLENT
	Symmetry	EXCELLENT
	Fluorescence	NONE
	Inscription(s)	691 LG7045387/2
<b>Comments:</b> This Laboratory Grown Diamond was created by Chemical Vapor Deposition (CVD) growth process. Type IIA		



THIS DOCUMENT WAS PRODUCED WITH THE FOLLOWING SECURITY MEASURES: SPECIAL DOCUMENT PAPER, INK SCREENS, WATERMARK, BACKGROUND DESIGNS, HOLOGRAM AND OTHER SECURITY FEATURES NOT LISTED AND DO EXCEED DOCUMENT SECURITY INDUSTRY GUIDELINE