



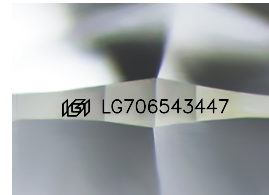
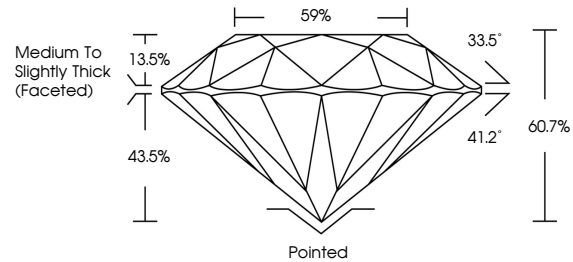
**INTERNATIONAL
GEMOLOGICAL
INSTITUTE**

ELECTRONIC COPY

LABORATORY GROWN DIAMOND REPORT

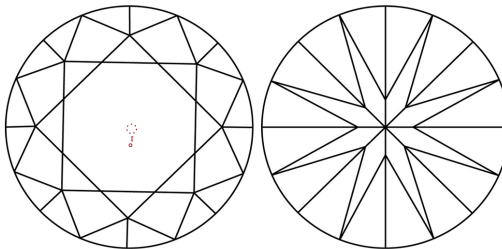
LG706543447
Report verification at igi.org

PROPORTIONS



Sample Image Used

CLARITY CHARACTERISTICS



KEY TO SYMBOLS

Red symbols indicate internal characteristics.
Green symbols indicate external characteristics.

COLOR

D E F G H I J Faint Very Light Light

CLARITY

IF WS¹⁻² VS¹⁻² SI¹⁻² I¹⁻³

Internally Flawless	Very Very Slightly Included	Very Slightly Included	Slightly Included	Included
------------------------	--------------------------------	---------------------------	----------------------	----------



© IGI 2020, International Gemological Institute

FD - 10 20

www.igi.org

THIS DOCUMENT WAS PRODUCED WITH THE FOLLOWING SECURITY MEASURES: SPECIAL DOCUMENT PAPER, INK SCREENS, WATERMARK BACKGROUND DESIGNS, HOLOGRAM AND OTHER SECURITY FEATURES NOT LISTED AND DO EXCEED DOCUMENT SECURITY INDUSTRY GUIDELINES.

LABORATORY GROWN DIAMOND REPORT



May 9, 2025

IGI Report Number **LG706543447**

Description	LABORATORY GROWN DIAMOND
-------------	--------------------------

Shape and Cutting Style **ROUND BRILLIANT**

Measurements	8.04 - 8.10 X 4.90 MM
--------------	-----------------------

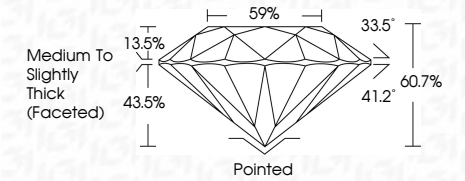
GRADING RESULTS

Carat Weight **1.96 CARAT**

Color Grade	F
-------------	---

Clarity Grade VS 2

Cut Grade **IDEAL**



ADDITIONAL GRADING INFORMATION

Polish **EXCELLENT**Symmetry **EXCELLENT**Fluorescence **NONE**Inscription(s) **151 LG706543447**

Comments: This Laboratory Grown Diamond was created by Chemical Vapor Deposition (CVD) growth process.
Type IIa



IGI

May 9, 2025	IGI Report No. LG70653447	1.96 CADAT F VS 2 ID5AL 60.7% 59%	Pointed EXCELLENT EXCELLENT NONE
ROUND BRILLANT	8.04 - & 10 X 4.90 MM	Medium to Slightly Thick (faceted)	#61 LG70653447
Carat Weight	Color Grade	Cut Grade	Symmetry
Clarity Grade	Girdle	Depth	Fluorescence
Table	Pavilion	Girdle	Inscription(s)
Culet	Polish	Symmetry	Comments:
Excellence	Excellent	Excellent	This Laboratory Grown Diamond was created by Chemical Vapor Deposition (CVD) growth process.
None	None	None	Type Icd