



**INTERNATIONAL
GEMOLOGICAL
INSTITUTE**

ELECTRONIC COPY

LG706543659
Report verification at igi.org

LABORATORY GROWN DIAMOND REPORT



May 16, 2025

IGI Report Number **LG706543659**

Description	LABORATORY GROWN DIAMOND
-------------	--------------------------

Shape and Cutting Style **ROUND BRILLIANT**

Measurements **6.48 - 6.53 X 3.98 MM**

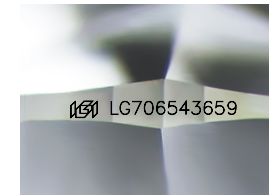
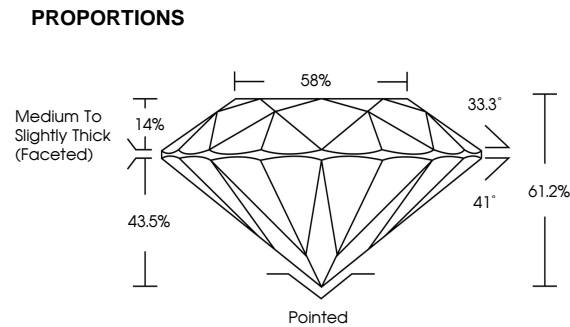
GRADING RESULTS

Carat Weight 1.04 CARAT

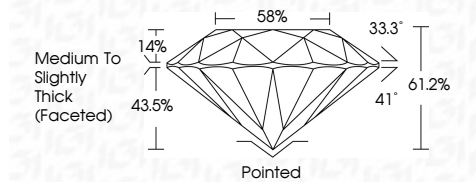
Color Grade	E
-------------	---

Clarity Grade **VVS 2**

Cut Grade **IDEAL**



Sample Image Used



COLOR

D E F G H I J Faint Very Light Light

CLARITY

IF VWS¹⁻² VS¹⁻² SI¹⁻² I¹

Internally Flawless	Very Very Slightly Included	Very Slightly Included	Slightly Included	Included
------------------------	--------------------------------	---------------------------	----------------------	----------



© IGI 2020, International Gemmological Institute

FD - 10 20

www.igi.org



May 16, 2025
IGI Report No LG706543659
ROUND BRILLIANT

6.48 - 6.53 X 3.98 MM
Carat Weight
1.04 CARAT

0.46 - 0.53 X 0.90 mm	1.04 CARAT	E
Carat Weight		
Color Grade		

Clarity Grade	VS2
Cut Grade	IDEAL

Cut Grade	IDEAL
Depth	61.2%
Table	59%

more		55%
Girdle	Medium To Slightly Thick (Faceted)	

	Culet	Pointed	Excellent
Polish			

Polish	EXCELLENT
Symmetry	EXCELLENT
Fluorescence	NONE

Inscription(s) **151 LG706543659**

Comments:
This Laboratory Grown Diamond was created by Chemical Vapor Deposition

(CVD) growth process,
Type IIa