



**INTERNATIONAL
GEMOLOGICAL
INSTITUTE**

ELECTRONIC COPY

LABORATORY GROWN DIAMOND REPORT

| | |
|-------------------------|--|
| May 15, 2025 | |
| IGI Report Number | LG706544243 |
| Description | LABORATORY GROWN DIAMOND |
| Shape and Cutting Style | CUT CORNERED RECTANGULAR MODIFIED BRILLIANT |
| Measurements | 10.31 X 7.20 X 4.67 MM |

GRADING RESULTS

| | |
|---------------|-------------|
| Carat Weight | 3.01 CARATS |
| Color Grade | F |
| Clarity Grade | VVS 2 |
| Cut Grade | EXCELLENT |

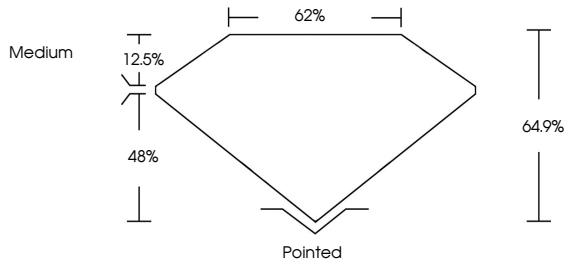
ADDITIONAL GRADING INFORMATION

| | |
|----------------|---|
| Polish | EXCELLENT |
| Symmetry | EXCELLENT |
| Fluorescence | NONE |
| Inscription(s) |  LG706544243 |

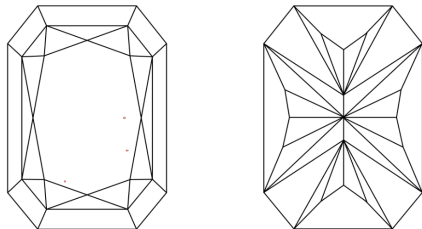
Comments: This Laboratory Grown Diamond was created by Chemical Vapor Deposition (CVD) growth process.
Type IIa

LG706544243
Report verification at igi.org

PROPORTIONS

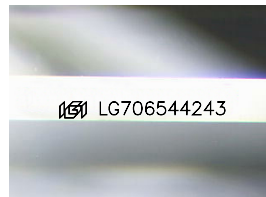


CLARITY CHARACTERISTICS



KEY TO SYMBOLS

Red symbols indicate internal characteristics.
Green symbols indicate external characteristics.



Sample Image Used

COLOR

D E F G H I J Faint Very Light Light

CLARITY

IF WS¹⁻² VS¹⁻² SI¹⁻² I¹⁻³

| | | | | |
|---------------------|-----------------------------|------------------------|-------------------|----------|
| Internally Flawless | Very Very Slightly Included | Very Slightly Included | Slightly Included | Included |
|---------------------|-----------------------------|------------------------|-------------------|----------|



© IGI 2020, International Gemological Institute

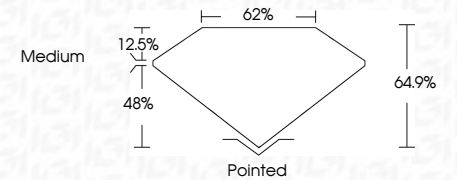
FD - 10 20

www.igi.org

LABORATORY GROWN DIAMOND REPORT



| | |
|-------------------------|---|
| May 15, 2025 | |
| IGI Report Number | LG706544243 |
| Description | LABORATORY GROWN DIAMOND |
| Shape and Cutting Style | CUT CORNERED RECTANGULAR MODIFIED BRILLIANT |
| Measurements | 10.31 X 7.20 X 4.67 MM |
| GRADING RESULTS | |
| Carat Weight | 3.01 CARATS |
| Color Grade | F |
| Clarity Grade | VVS 2 |
| Cut Grade | EXCELLENT |



ADDITIONAL GRADING INFORMATION

| | |
|---|-----------------------------|
| Polish | EXCELLENT |
| Symmetry | EXCELLENT |
| Fluorescence | NONE |
| Inscription(s) | 1531 LG706544243 |
| <p>Comments: This Laboratory Grown Diamond was created by Chemical Vapor Deposition (CVD) growth process.</p> <p>Type IIa</p> | |



IGI

| | | | |
|--------------------------------------|---------------|-----------|--------------------------------------|
| May 15, 2026 | 3.01 CARATS | VS 2 | Polished |
| IGI REPORT NO. I670554243 | F | EXCELLENT | EXCELLENT |
| CUT CORNERED BEC. MODIFIED BRILLIANT | | 64.9% | EXCELLENT |
| | | 62% | NONE |
| | | Medium | (#61) I670554243 |
| 10.31 X 7.20 X 4.57 MM | | | |
| Carat Weight | Clarity Grade | Cut Grade | Symmetry |
| Color Grade | Depth | Table | Fluorescence |
| | | Grade | Inscriptions(s) |
| | | | Comments: |
| | | | The Laboratory Grown Diamond was |
| | | | created by Chemical Vapor Deposition |
| | | | (CVD) growth process. |
| | | | Type Ila |