



**ELECTRONIC COPY**

## LABORATORY GROWN DIAMOND REPORT

|                         |                          |
|-------------------------|--------------------------|
| May 9, 2025             |                          |
| IGI Report Number       | LG706551827              |
| Description             | LABORATORY GROWN DIAMOND |
| Shape and Cutting Style | ROUND BRILLIANT          |
| Measurements            | 6.75 - 6.82 X 4.20 MM    |

## GRADING RESULTS

|               |            |
|---------------|------------|
| Carat Weight  | 1.18 CARAT |
| Color Grade   | D          |
| Clarity Grade | VVS 1      |
| Cut Grade     | IDEAL      |

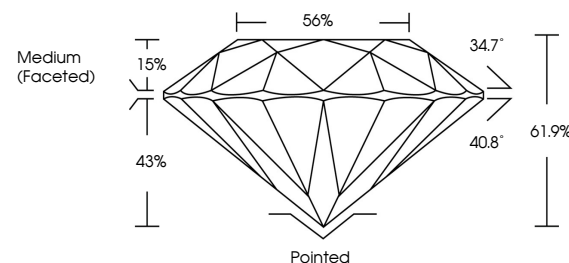
### ADDITIONAL GRADING INFORMATION

|                |                 |
|----------------|-----------------|
| Polish         | EXCELLENT       |
| Symmetry       | EXCELLENT       |
| Fluorescence   | NONE            |
| Inscription(s) | 151 LG706551827 |

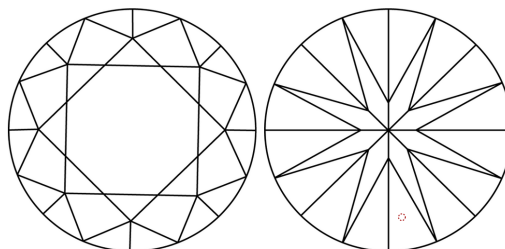
Comments: HEARTS & ARROWS  
As Grown - No indication of post-growth treatment.  
This Laboratory Grown Diamond was created by High  
Pressure High Temperature (HPHT) growth process.  
Type II

LG706551827  
Report verification at [igi.org](https://igi.org)

## PROPORTIONS

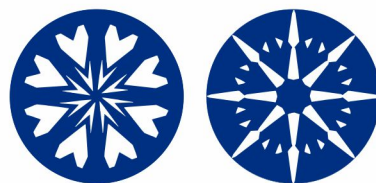


## CLARITY CHARACTERISTICS

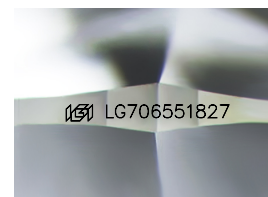


### KEY TO SYMBOLS

Red symbols indicate internal characteristics.  
Green symbols indicate external characteristics.



**www.igi.org**



Sample Image Used

## COLOR

D E F G H I J Faint Very Light Light

## CLARITY

IF WS<sup>1-2</sup> VS<sup>1-2</sup> SI<sup>1-2</sup> |<sup>1-3</sup>

|                        |                                |                           |                      |          |
|------------------------|--------------------------------|---------------------------|----------------------|----------|
| Internally<br>Flawless | Very Very<br>Slightly Included | Very<br>Slightly Included | Slightly<br>Included | Included |
|------------------------|--------------------------------|---------------------------|----------------------|----------|



© IGI 2020, International Gemological Institute

FD - 10 20

THIS DOCUMENT WAS PRODUCED WITH THE FOLLOWING SECURITY MEASURES: SPECIAL DOCUMENT PAPER, INK SCREENS, WATERMARK, BACKGROUND DESIGNS, HOLOGRAM AND OTHER SECURITY FEATURES NOT LISTED AND DO EXCEED DOCUMENT SECURITY INDUSTRY GUIDELINE

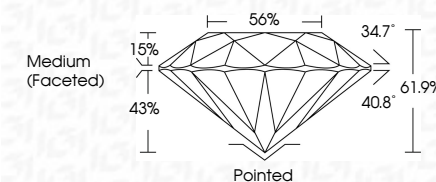
## LABORATORY GROWN DIAMOND REPORT



|                         |                          |
|-------------------------|--------------------------|
| May 9, 2025             |                          |
| IGI Report Number       | LG706551827              |
| Description             | LABORATORY GROWN DIAMOND |
| Shape and Cutting Style | ROUND BRILLIANT          |
| Measurements            | 6.75 - 6.82 X 4.20 MM    |

## GRADING RESULTS

|               |            |
|---------------|------------|
| Carat Weight  | 1.18 CARAT |
| Color Grade   | D          |
| Clarity Grade | VVS 1      |
| Cut Grade     | IDEAL      |



### ADDITIONAL GRADING INFORMATION

|                |                  |
|----------------|------------------|
| Polish         | EXCELLENT        |
| Symmetry       | EXCELLENT        |
| Fluorescence   | NONE             |
| Inscription(s) | 151 LG70655 1827 |

Comments: HEARTS & ARROWS  
As Grown - No indication of post-growth treatment.  
This Laboratory Grown Diamond was created by High  
Pressure High Temperature (HPHT) growth process.  
Type II



|                        |                      |
|------------------------|----------------------|
|                        | May 9, 2006          |
| G Report No.           | LGP70658   BZT       |
| <b>ROUND BRILLIANT</b> |                      |
| Diameter               | 7.5 - 6.82 X 4.20 MM |
| Carat Weight           | 1.18 CARAT           |
| Color Grade            | D                    |
| Clarity Grade          | VVS 1                |
| Cut Grade              | IDEAL                |
| Depth                  | 61.9%                |
| Table                  | 56%                  |
| Girdle                 | Medium (Faceted)     |
| Pole Star              | Polished             |
| Symmetry               | EXCELLENT            |
| Fluorescence           | NONE                 |
| Inscriptions(s)        | #B9 LGP70658 BZT     |

**Comments:**  
 • HEART & ARROWS  
 • None – No indication of post-growth treatment.  
 • This Laboratory Growth Diamond was created by High Pressure High Temperature (HPHT) growth process.