

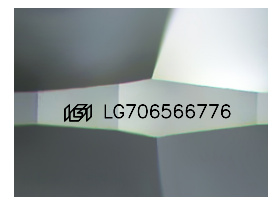
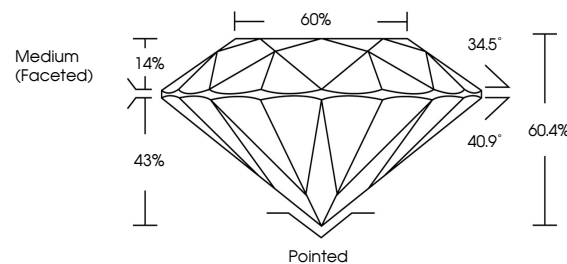


ELECTRONIC COPY

LABORATORY GROWN DIAMOND REPORT

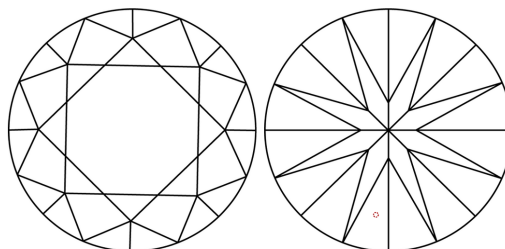
LG706566776
Report verification at igi.org

PROPORTIONS



Sample Image Used

CLARITY CHARACTERISTICS



KEY TO SYMBOLS

Red symbols indicate internal characteristics.
Green symbols indicate external characteristics.



www.igi.org

LABORATORY GROWN DIAMOND REPORT



May 10, 2025

IGI Report Number **LG706566776**Description **LABORATORY GROWN DIAMOND**Shape and Cutting Style **ROUND BRILLIANT**

Measurements 6.64 - 6.67 X 4.02 MM

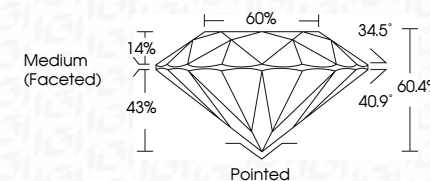
GRADING RESULTS

Carat Weight **1.09 CARAT**

Color Grade D

Clarity Grade **VVS 1**

Cut Grade **IDEAL**



ADDITIONAL GRADING INFORMATION

Polish **EXCELLENT**Symmetry **EXCELLENT**Fluorescence NONIInscription(s) LG706566776

Comments: HEARTS & ARROWS

As Grown - No indication of post-growth treatment.
This Laboratory Grown Diamond was created by High
Pressure High Temperature (HPHT) growth process.
Type II



May 10, 2025	Carat Weight	1.07 CARAT
Color	Color	D
Clarity	Clarity Grade	VVS 1
Cut	Cut Grade	IDEAL
Depth	Depth	60.4%
Table	Table	60%
Girdle	Girdle	Medium (Faceted)
Culet	Culet	Pointed
Polish	Polish	EXCELLENT
Symmetry	Symmetry	EXCELLENT
Fluorescence	Fluorescence	NONE
Inscriptions(s)	Inscriptions(s)	49J L5705662776
Comments	Comments	

THIS DIAMOND IS GROWN - NO INDICATION OF POST-GROWTH TREATMENT.

This Laboratory Grown Diamond was created by High Pressure High Temperature (HPHT) growth process.

