



ELECTRONIC COPY

LABORATORY GROWN DIAMOND REPORT

LG707509836
Report verification at igi.org

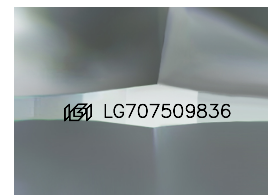
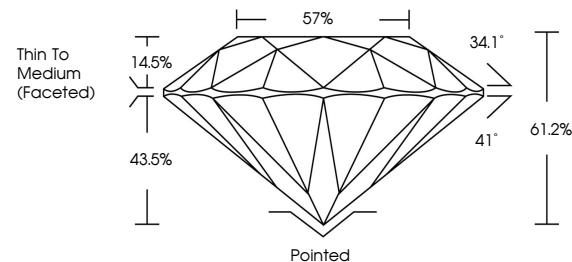
May 13, 2025	
IGI Report Number	LG707509836
Description	LABORATORY GROWN DIAMOND
Shape and Cutting Style	ROUND BRILLIANT
Measurements	6.51 - 6.55 X 4.00 MM
GRADING RESULTS	
Carat Weight	1.03 CARAT
Color Grade	E
Clarity Grade	VVS 2
Cut Grade	IDEAL

ADDITIONAL GRADING INFORMATION

Polish	EXCELLENT
Symmetry	EXCELLENT
Fluorescence	NONE
Inscription(s)	 LG707509836

Comments: This Laboratory Grown Diamond was created by Chemical Vapor Deposition (CVD) growth process.
Type IIa

PROPORTIONS



Sample Image Used

COLOR

D E F G H I J Faint Very Light Light

CLARITY

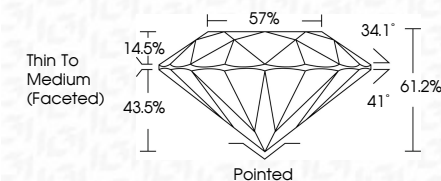
IF VS¹⁻² VS¹⁻² S¹⁻² |¹⁻³

Internally Flawless	Very Very Slightly Included	Very Slightly Included	Slightly Included	Included
------------------------	--------------------------------	---------------------------	----------------------	----------

LABORATORY GROWN DIAMOND REPORT



May 13, 2025	
IGI Report Number	LG707509836
Description	LABORATORY GROWN DIAMOND
Shape and Cutting Style	ROUND BRILLIANT
Measurements	6.51 - 6.55 X 4.00 MM
GRADING RESULTS	
Carat Weight	1.03 CARAT
Color Grade	E
Clarity Grade	VVS 2
Cut Grade	IDEAL



ADDITIONAL GRADING INFORMATION

Polish	EXCELLENT
Symmetry	EXCELLENT
Fluorescence	NONE
Inscription(s)	 LG707509836
<p>Comments: This Laboratory Grown Diamond was created by Chemical Vapor Deposition (CVD) growth process.</p> <p>Type IIa</p>	



IG



© IGI 2020, International Gemological Institute

FD - 10 20



THIS DOCUMENT WAS PRODUCED WITH THE FOLLOWING SECURITY MEASURES: SPECIAL DOCUMENT PAPER, INK SCREENS, WATERMARK, BACKGROUND DESIGNS, HOLOGRAM AND OTHER SECURITY FEATURES NOT LISTED AND DO EXCEED DOCUMENT SECURITY INDUSTRY GUIDELINES

www.igi.org

