

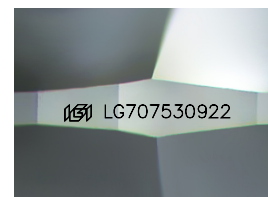
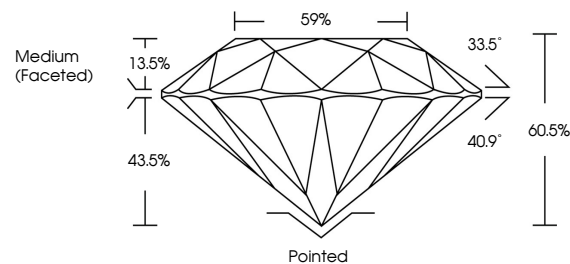


ELECTRONIC COPY

LABORATORY GROWN DIAMOND REPORT

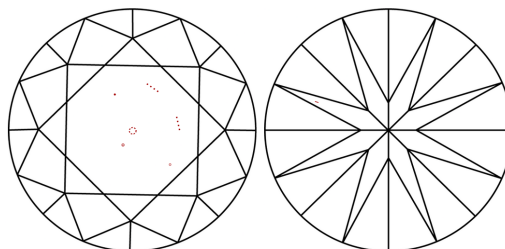
LG707530922
Report verification at igi.org

PROPORTIONS



Sample Image Used

CLARITY CHARACTERISTICS



KEY TO SYMBOLS

Red symbols indicate internal characteristics.
Green symbols indicate external characteristics.

COLOR

D E F G H I J Faint Very Light Light

CLARITY

IF VS¹⁻² VS¹⁻² S¹⁻² |¹⁻³

Internally Flawless	Very Very Slightly Included	Very Slightly Included	Slightly Included	Included
------------------------	--------------------------------	---------------------------	----------------------	----------

LABORATORY GROWN DIAMOND REPORT



May 28, 2025

IGI Report Number **LG707530922**

Description	LABORATORY GROWN DIAMOND
-------------	--------------------------

Shape and Cutting Style **ROUND BRILLIANT**

Measurements 8.25 - 8.28 X 5.01 MM

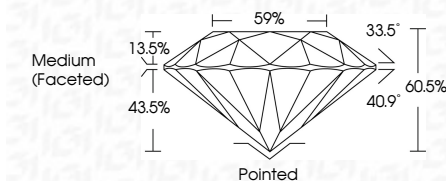
GRADING RESULTS

Carat Weight **2.10 CARATS**

Color Grade	D
-------------	---

Clarity Grade VS 2

Cut Grade **IDEAL**



ADDITIONAL GRADING INFORMATION

Polish **EXCELLENT**Symmetry **EXCELLENT**Fluorescence **NONE**Inscription(s) LG707530922

Comments: This Laboratory Grown Diamond was created by Chemical Vapor Deposition (CVD) growth process.
Type IIa



© IGI 2020, International Gemological Institute

FD - 10 20

www.igi.org



THIS DOCUMENT WAS PRODUCED WITH THE FOLLOWING SECURITY MEASURES: SPECIAL DOCUMENT PAPER, INK SCREENS, WATERMARK, BACKGROUND DESIGNS, HOLOGRAM AND OTHER SECURITY FEATURES NOT LISTED AND DO EXCEED DOCUMENT SECURITY INDUSTRY GUIDELINE

May 24, 2025	Color Weight	2.10 CARATS	<p>Comments: This is a Crown Diamond was identified by Chemical Vapor Deposition (CVD) growth process. Type IIa</p>
GI Report No. LG707530922	Color Grade	D	
ROUND BRILLIANT	Clarity Grade	VS 2	
	Carat Grade	IDEAL	
	Depth	60.6%	
	Table	59%	
	Girdle	Medium (Faceted)	
	Culet	Pointed	<p>#6 LG707530922</p>
	Polish	EXCELLENT	
	Symmetry	EXCELLENT	
	Fluorescence	NONE	
	Inscriptions(s)		