

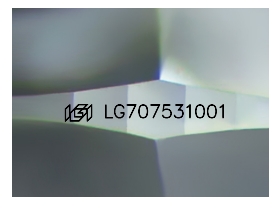
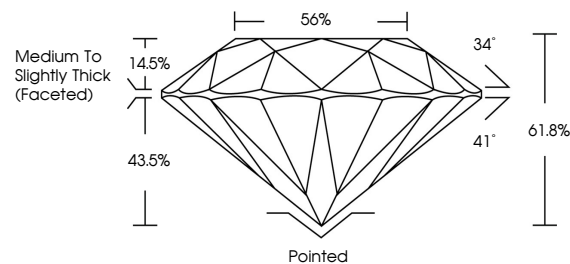


ELECTRONIC COPY

LABORATORY GROWN DIAMOND REPORT

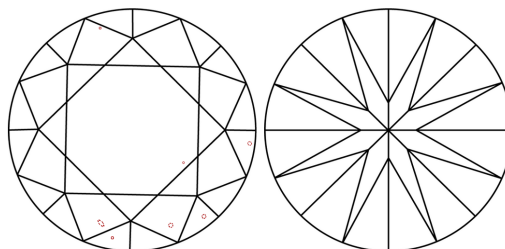
LG707531001
Report verification at igi.org

PROPORTIONS



Sample Image Used

CLARITY CHARACTERISTICS



KEY TO SYMBOLS

Red symbols indicate internal characteristics.
Green symbols indicate external characteristics.

COLOR

D E F G H I J Faint Very Light Light

CLARITY

IF WS¹⁻² VS¹⁻² SI¹⁻² |¹⁻³

Internally Flawless	Very Very Slightly Included	Very Slightly Included	Slightly Included	Included
------------------------	--------------------------------	---------------------------	----------------------	----------

LABORATORY GROWN DIAMOND REPORT



May 28, 2025

IGI Report Number **LG707531001**Description **LABORATORY GROWN DIAMOND**Shape and Cutting Style **ROUND BRILLIANT**

Measurements 8.74 - 8.78 X 5.41 MM

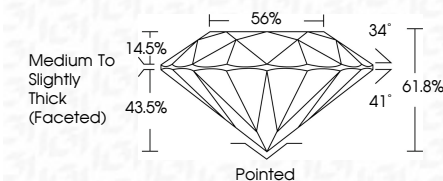
GRADING RESULTS

Carat Weight **2.54 CARATS**

Color Grade **E**

Clarity Grade VS 2

Cut Grade **IDEAL**



ADDITIONAL GRADING INFORMATION

Polish EXCELLENT

Symmetry **EXCELLENT**Fluorescence **NONE**Inscription(s) LG707531001

Comments: This Laboratory Grown Diamond was created by Chemical Vapor Deposition (CVD) growth process.
Type IIa



IG



© IGI 2020, International Gemological Institute

FD - 10 20

www.igi.org



THIS DOCUMENT WAS PRODUCED WITH THE FOLLOWING SECURITY MEASURES: SPECIAL DOCUMENT PAPER, INK SCREENS, WATERMARK, BACKGROUND DESIGNS, HOLOGRAM AND OTHER SECURITY FEATURES NOT LISTED AND DO EXCEED DOCUMENT SECURITY INDUSTRY GUIDELINES

May 28, 2025
IGI Report No LG707531001
ROUND BRILLIANT

8.74 - 8.78 X 5.41 MM		2.54 CARATS	
Carat Weight		Color Grade	E
Clarity Grade		Cut Grade	VS 2
Depth		Table	IDEAL
Girdle			61.0%
			56%
			Medium To Slightly Thick (Faceted)
Culet			Pointed
Polish			EXCELLENT
Symmetry			EXCELLENT
Fluorescence			NONE
Inscriptions			see comments

Comments:
This Laboratory Grown Diamond was created by Chemical Vapor Deposition (CVD) growth process.