

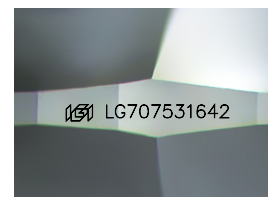
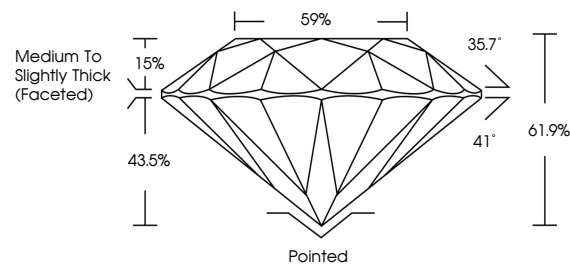


ELECTRONIC COPY

LABORATORY GROWN DIAMOND REPORT

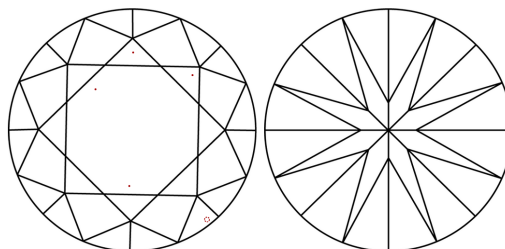
LG707531642
Report verification at igi.org

PROPORTIONS



Sample Image Used

CLARITY CHARACTERISTICS



KEY TO SYMBOLS

Red symbols indicate internal characteristics.
Green symbols indicate external characteristics.

COLOR

D E F G H I J Faint Very Light Light

CLARITY

IF WS¹⁻² VS¹⁻² SI¹⁻² |¹⁻³

Internally Flawless	Very Very Slightly Included	Very Slightly Included	Slightly Included	Included
------------------------	--------------------------------	---------------------------	----------------------	----------



© IGI 2020, International Gemological Institute

FD - 10 20

www.igi.org

LABORATORY GROWN DIAMOND REPORT



May 30, 2025

IGI Report Number **LG707531642**Description **LABORATORY GROWN DIAMOND**Shape and Cutting Style **ROUND BRILLIANT**

Measurements 10.60 - 10.64 X 6.57 MM

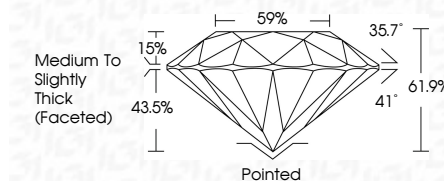
GRADING RESULTS

Carat Weight **4.60 CARATS**

Color Grade D

Clarity Grade **VS 2**

Cut Grade **IDEAL**



ADDITIONAL GRADING INFORMATION

Polish **EXCELLENT**Symmetry **EXCELLENT**Fluorescence **NONE**Inscription(s) LG707531642

Comments: This Laboratory Grown Diamond was created by Chemical Vapor Deposition (CVD) growth process.
Type IIa



May 30, 2025	Report No. LG707631642	4.40 CARATS	D	VVS 2	IDEAL	61.9%	59%	Medium to Slightly Thick (Frosted)	Polished	EXCELLENT	EXCELLENT	NONE	(g) LG707631642	Comments: The Laboratory Growth Diamond was created by Chemical Vapor Deposition (CVD) growth process. Type IIa
ROUND-BRILLIANT	10.647 x 6.67 MM	Carat Weight	Color Grade	Clarity Grade	Cut Grade	Depth	Gable	Table	Polish	Symmetry	Fluorescence	Fluorescence(s)		