



**ELECTRONIC COPY**

## LABORATORY GROWN DIAMOND REPORT

LG707542117  
Report verification at [igi.org](https://igi.org)

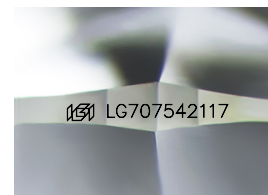
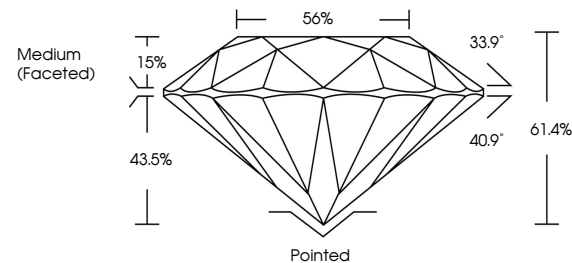
May 17, 2025	
IGI Report Number	LG707542117
Description	LABORATORY GROWN DIAMOND
Shape and Cutting Style	ROUND BRILLIANT
Measurements	6.48 - 6.51 X 3.98 MM
GRADING RESULTS	
Carat Weight	1.02 CARAT
Color Grade	D
Clarity Grade	VVS 2
Cut Grade	IDEAL

### ADDITIONAL GRADING INFORMATION

Polish	EXCELLENT
Symmetry	EXCELLENT
Fluorescence	NONE
Inscription(s)	131 LG707542117

Comments: This Laboratory Grown Diamond was created by Chemical Vapor Deposition (CVD) growth process.  
Type IIa

## PROPORTIONS



Sample Image Used

## COLOR

D E F G H I J Faint Very Light Light

## CLARITY

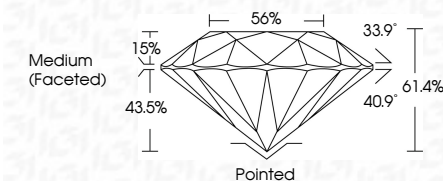
IF                      VS<sup>1-2</sup>                      VS<sup>1-2</sup>                      S<sup>1-2</sup>                      |<sup>1-3</sup>

Internally Flawless	Very Very Slightly Included	Very Slightly Included	Slightly Included	Included
------------------------	--------------------------------	---------------------------	----------------------	----------

## LABORATORY GROWN DIAMOND REPORT



May 17, 2025	
IGI Report Number	LG707542117
Description	LABORATORY GROWN DIAMOND
Shape and Cutting Style	ROUND BRILLIANT
Measurements	6.48 - 6.51 X 3.98 MM
GRADING RESULTS	
Carat Weight	1.02 CARAT
Color Grade	D
Clarity Grade	VVS 2
Cut Grade	IDEAL



### ADDITIONAL GRADING INFORMATION

Polish	EXCELLENT
Symmetry	EXCELLENT
Fluorescence	NONE
Inscription(s)	 LG707542117
<p>Comments: This Laboratory Grown Diamond was created by Chemical Vapor Deposition (CVD) growth process.</p> <p>Type IIa</p>	



© IGI 2020, International Gemological Institute

FD - 10 20

**www.igi.org**



THIS DOCUMENT WAS PRODUCED WITH THE FOLLOWING SECURITY MEASURES: SPECIAL DOCUMENT PAPER, INK SCREENS, WATERMARK, BACKGROUND DESIGNS, HOLOGRAM AND OTHER SECURITY FEATURES NOT LISTED AND DO EXCEED DOCUMENT SECURITY INDUSTRY GUIDELINES

May 17, 2025  
IGI Report No LG707542117  
ROUND BRILLIANT

6.48 - 6.51 X 3.98 MM

6.48 - 6.51 X 3.98 MM  
Carat Weight 1.02 CARAT

Catali Weiglin	1.02 CARAT
Color Grade	D

Clarity Grade	WS 2
FL	
IF	
VS	
VVS	
VV	
V	
S	
I	
SI	
I1	
I2	
I3	
I4	
I5	
I6	
I7	
I8	
I9	
I10	
I11	
I12	
I13	
I14	
I15	
I16	
I17	
I18	
I19	
I20	
I21	
I22	
I23	
I24	
I25	
I26	
I27	
I28	
I29	
I30	
I31	
I32	
I33	
I34	
I35	
I36	
I37	
I38	
I39	
I40	
I41	
I42	
I43	
I44	
I45	
I46	
I47	
I48	
I49	
I50	
I51	
I52	
I53	
I54	
I55	
I56	
I57	
I58	
I59	
I60	
I61	
I62	
I63	
I64	
I65	
I66	
I67	
I68	
I69	
I70	
I71	
I72	
I73	
I74	
I75	
I76	
I77	
I78	
I79	
I80	
I81	
I82	
I83	
I84	
I85	
I86	
I87	
I88	
I89	
I90	
I91	
I92	
I93	
I94	
I95	
I96	
I97	
I98	
I99	
I100	

Cut Grade	IDEAL
Depth	41.40%

Depth	61.4%
Table	56%

Girdle	Medium (Faceted)	Carat Weight
		0.02

[illegible]

Culet	Pointed
Polish	EXCELLENT

Posit  
Symmetry

Fluorescence	NONE
Inscription(s)	1681 G707542117

scription(\$)

**Comments:**  
This Laboratory Grown Diamond was

created by Chemical Vapor Deposition (CVD) growth process.

Type IIa