



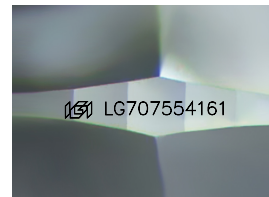
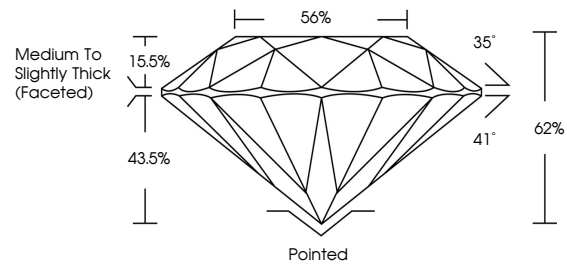
**INTERNATIONAL
GEMOLOGICAL
INSTITUTE**

ELECTRONIC COPY

LABORATORY GROWN DIAMOND REPORT

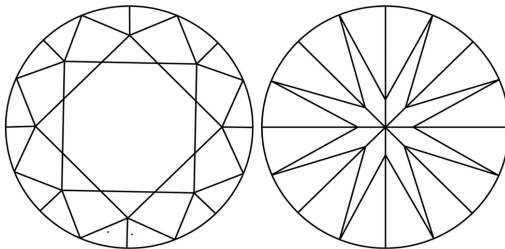
LG707554161
Report verification at igi.org

PROPORTIONS



Sample Image Used

CLARITY CHARACTERISTICS



KEY TO SYMBOLS

Red symbols indicate internal characteristics.
Green symbols indicate external characteristics.

COLOR

D E F G H I J Faint Very Light Light

CLARITY

IF WS¹⁻² VS¹⁻² SI¹⁻² 1-3

Internally Flawless	Very Very Slightly Included	Very Slightly Included	Slightly Included	Included
------------------------	--------------------------------	---------------------------	----------------------	----------



© IGI 2020, International Gemological Institute

FD - 10 20

www.igi.org

LABORATORY GROWN DIAMOND REPORT



July 16, 2025

IGI Report Number **LG707554161**

Description	LABORATORY GROWN DIAMOND
-------------	--------------------------

Shape and Cutting Style **ROUND BRILLIANT**

Measurements 7.41 - 7.46 X 4.61 MM

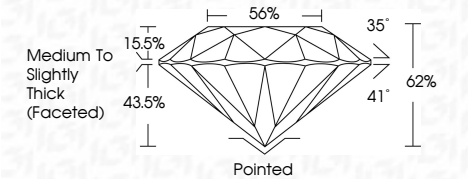
GRADING RESULTS

Carat Weight **1.55 CARAT**

Color Grade **D**

Clarity Grade **VVS 2**

Cut Grade **IDEAL**



ADDITIONAL GRADING INFORMATION

Polish **EXCELLENT**

Symmetry **EXCELLENT**

Fluorescence **NONE**

Inscription(s)  LG707554161

Comments: As Grown - No indication of post-growth treatment.

This Laboratory Grown Diamond was created by High Pressure High Temperature (HPHT) growth process.

Type II



IGI

<p>JULY 16, 2025 IGI Report No. LG707554161 ROUND BRILLIANT</p>	<p>7.41 - 7.46 X 4.51 MM</p>	<p>1.55 CARAT</p>
<p>Color Grade</p>	<p>D</p>	
<p>Clarity Grade</p>	<p>VVS 2</p>	
<p>Depth</p>	<p>IDEAL</p>	
<p>Table</p>	<p>62%</p>	
<p>Girdle</p>	<p>Medium to Slightly Thick (Faceted)</p>	
<p>Culet</p>	<p>Pointed</p>	
<p>Polish</p>	<p>EXCELLENT</p>	
<p>Symmetry</p>	<p>EXCELLENT</p>	
<p>Fluorescence</p>	<p>NONE</p>	
<p>Inscriptions</p>	<p>681 LG707554161</p>	

Comments:
 As Grown - No indication of post-growth treatment.
 This Laboratory Grown Diamond was created by High Pressure High Temperature (HPHT) growth process.
 Type II