



**ELECTRONIC COPY**

## LABORATORY GROWN DIAMOND REPORT

LG707559382  
Report verification at [igi.org](https://igi.org)

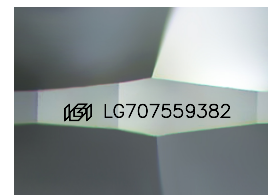
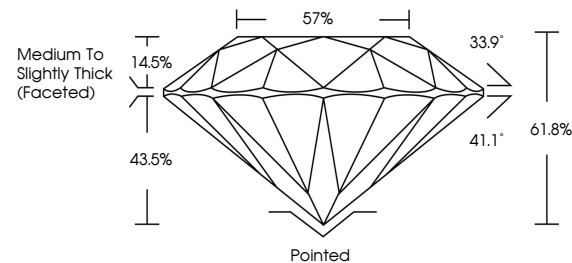
May 15, 2025	
IGI Report Number	LG707559382
Description	LABORATORY GROWN DIAMOND
Shape and Cutting Style	ROUND BRILLIANT
Measurements	8.13 - 8.16 X 5.03 MM
GRADING RESULTS	
Carat Weight	2.05 CARATS
Color Grade	E
Clarity Grade	VVS 2
Cut Grade	IDEAL

### ADDITIONAL GRADING INFORMATION

Polish	EXCELLENT
Symmetry	EXCELLENT
Fluorescence	NONE
Inscription(s)	 1631 LG707559382

Comments: This Laboratory Grown Diamond was created by Chemical Vapor Deposition (CVD) growth process.  
Type IIa

## PROPORTIONS



Sample Image Used

**COLOR**

D E F G H I J Faint Very Light Light

## CLARITY

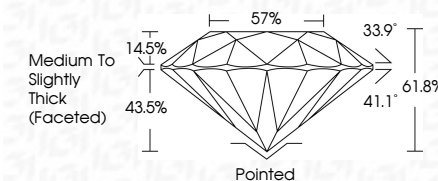
IF                      WS<sup>1-2</sup>                      VS<sup>1-2</sup>                      SI<sup>1-2</sup>                      |<sup>1-3</sup>

Internally Flawless	Very Very Slightly Included	Very Slightly Included	Slightly Included	Included
------------------------	--------------------------------	---------------------------	----------------------	----------

## LABORATORY GROWN DIAMOND REPORT



May 15, 2025	
IGI Report Number	LG707559382
Description	LABORATORY GROWN DIAMOND
Shape and Cutting Style	ROUND BRILLIANT
Measurements	8.13 - 8.16 X 5.03 MM
GRADING RESULTS	
Carat Weight	2.05 CARATS
Color Grade	E
Clarity Grade	VVS 2
Cut Grade	IDEAL



### ADDITIONAL GRADING INFORMATION

Polish	EXCELLENT
Symmetry	EXCELLENT
Fluorescence	NONE
Inscription(s)	 LG707559382
<p>Comments: This Laboratory Grown Diamond was created by Chemical Vapor Deposition (CVD) growth process.</p> <p>Type IIa</p>	



© IGI 2020, International Gemological Institute

FD - 10 20



THIS DOCUMENT WAS PRODUCED WITH THE FOLLOWING SECURITY MEASURES: SPECIAL DOCUMENT PAPER, INK SCREENS, WATERMARK, BACKGROUND DESIGNS, HOLOGRAM AND OTHER SECURITY FEATURES NOT LISTED AND DO EXCEED DOCUMENT SECURITY INDUSTRY GUIDELINE

**www.igi.org**

