



**INTERNATIONAL
GEMOLOGICAL
INSTITUTE**

ELECTRONIC COPY

LG708563536
Report verification at igi.org

LABORATORY GROWN DIAMOND REPORT



May 17, 2025

IGI Report Number **LG708563536**Description **LABORATORY GROWN DIAMOND**Shape and Cutting Style **ROUND BRILLIANT**

Measurements 7.27 - 7.33 X 4.43 MM

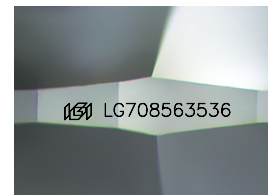
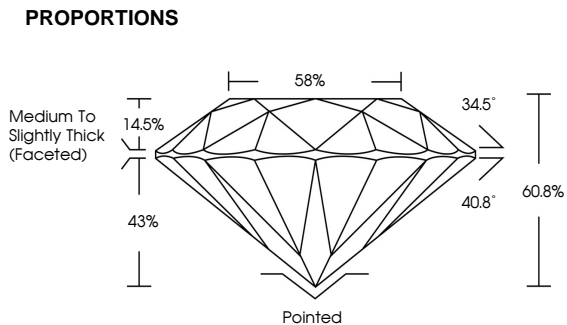
GRADING RESULTS

Carat Weight **1.44 CARAT**

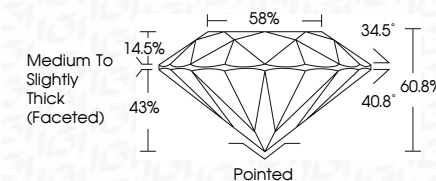
Color Grade	D
-------------	---

Clarity Grade **VVS 2**

Cut Grade **IDEAL**



Sample Image Used



COLOR

D E F G H I J Faint Very Light Light

CLARITY

IF VS¹⁻² VS¹⁻² SI¹⁻² 1-3

Internally Flawless	Very Very Slightly Included	Very Slightly Included	Slightly Included	Included
------------------------	--------------------------------	---------------------------	----------------------	----------



© IGI 2020, International Gemological Institute

FD - 10 20

www.igi.org



THIS DOCUMENT WAS PRODUCED WITH THE FOLLOWING SECURITY MEASURES: SPECIAL DOCUMENT PAPER, INK SCREENS, WATERMARK, BACKGROUND DESIGNS, HOLOGRAM AND OTHER SECURITY FEATURES NOT LISTED AND DO EXCEED DOCUMENT SECURITY INDUSTRY GUIDELINES



IG

	G Report No. LG70865836	
May 17, 2025	ROUND BRILLIANT	
	2.27 - 2.27 - 7.33 x 4.43 MM	
	Color Grade	1.41 CARAT
	Cut Grade	D
	Clarity Grade	VVS 2
	Depth	IDEAL
	Table	60.6%
	Girdle	59%
		Medium to Slightly Thick (faced)
	Fluorescence	Pinkish
	Symmetry	EXCELLENT
	Inscription(s)	NONE
		(#) L570865836
Comments:		
	Certified by Crown Diamond via	
	Graded by Chemical Vapor Deposition	
	(CVD) growth process.	
Type IIa		