

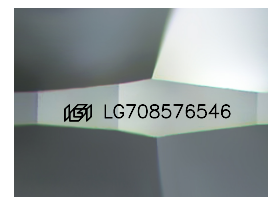
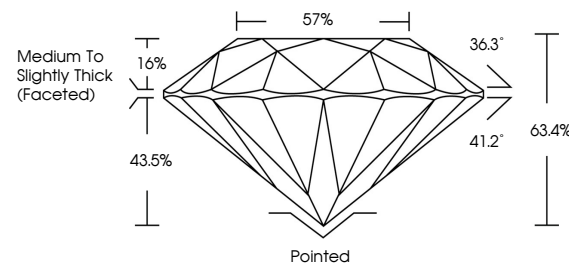


ELECTRONIC COPY

LABORATORY GROWN DIAMOND REPORT

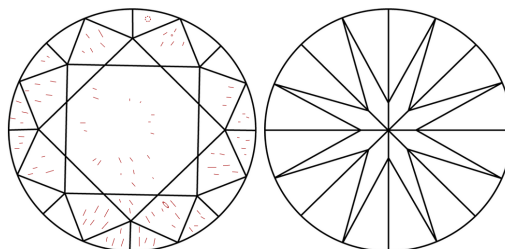
LG708576546
Report verification at igi.org

PROPORTIONS



Sample Image Used

CLARITY CHARACTERISTICS



KEY TO SYMBOLS

Red symbols indicate internal characteristics.
Green symbols indicate external characteristics.

COLOR

D E F G H I J Faint Very Light Light

CLARITY

IF WS¹⁻² VS¹⁻² SI¹⁻² |¹⁻³

| | | | | |
|---------------------|-----------------------------|------------------------|-------------------|----------|
| Internally Flawless | Very Very Slightly Included | Very Slightly Included | Slightly Included | Included |
|---------------------|-----------------------------|------------------------|-------------------|----------|



© IGI 2020, International Gemological Institute

FD - 10 20

www.igi.org

LABORATORY GROWN DIAMOND REPORT



May 17, 2025

IGI Report Number **LG708576546**Description **LABORATORY GROWN DIAMOND**Shape and Cutting Style **ROUND BRILLIANT**

Measurements 6.51 - 6.55 X 4.14 MM

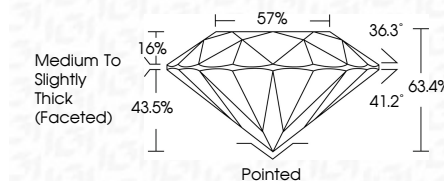
GRADING RESULTS

Carat Weight 1.10 CARAT

Color Grade D

Clarity Grade SI 1

Cut Grade **EXCELLENT**



ADDITIONAL GRADING INFORMATION

Polish EXCELLENT

Symmetry **EXCELLENT**Fluorescence NONInscription(s)  LG708576546

Comments: As Grown - No indication of post-growth treatment.

This Laboratory Grown Diamond was created by High Pressure High Temperature (HPHT) growth process.

Type II



| | | | | | | | | | | | | | | | | |
|--------------|---------------------------|-----------------|-----------------------|--------------|-------------|---------------|-----------|-------|-------|------------------------------------|---------|-----------|-----------|--------------|-----------------|--|
| May 17, 2025 | GI Report No. LG708576546 | ROUND BRILLIANT | 1.61 - 1.65 x 1.14 MM | 2.10 CARAT | D | SI 1 | EXCELLENT | 63.5% | 57% | Medium to Slightly Thick (Faceted) | Painted | EXCELLENT | EXCELLENT | NONE | 881 LG708576546 | Comments: No indication of post-growth treatment. This Laboratory Grown Diamond was created by High Pressure High Temperature (HPHT) growth process. |
| | | | | Color Weight | Color Grade | Clarity Grade | Cut Grade | Depth | Table | Girdle | Culet | Polish | Symmetry | Fluorescence | Inscriptions | Type 1b |