



**ELECTRONIC COPY**

## LABORATORY GROWN DIAMOND REPORT

May 17, 2025	
IGI Report Number	LG708578873
Description	LABORATORY GROWN DIAMOND
Shape and Cutting Style	ROUND BRILLIANT
Measurements	8.78 - 8.83 X 5.38 MM

## GRADING RESULTS

Carat Weight	2.55 CARATS
Color Grade	E
Clarity Grade	VS 1
Cut Grade	IDEAL

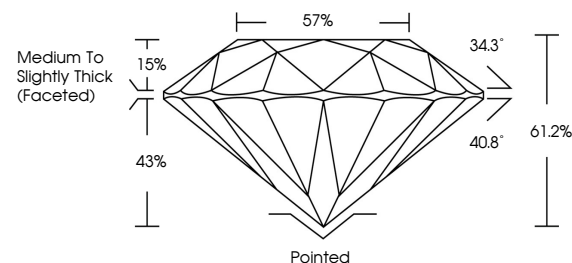
### ADDITIONAL GRADING INFORMATION

Polish	EXCELLENT
Symmetry	EXCELLENT
Fluorescence	NONE
Inscription(s)	 LG708578873

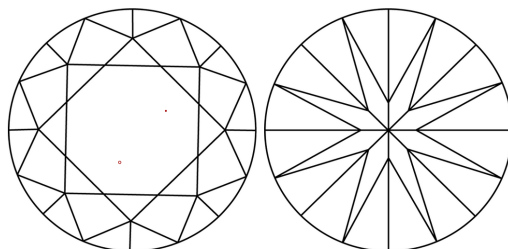
Comments: HEARTS & ARROWS  
This Laboratory Grown Diamond was created by  
Chemical Vapor Deposition (CVD) growth process.  
Type IIa

LG708578873  
Report verification at [igi.org](https://igi.org)

## PROPORTIONS



## CLARITY CHARACTERISTICS

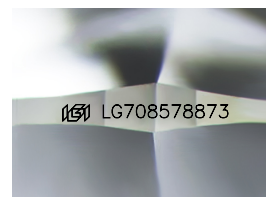


### KEY TO SYMBOLS

Red symbols indicate internal characteristics.  
Green symbols indicate external characteristics.



**www.igi.org**



Sample Image Used

## COLOR

D E F G H I J Faint Very Light Light

## CLARITY

IF                      VWS<sup>1-2</sup>                      VS<sup>1-2</sup>                      SI<sup>1-2</sup>                      I<sup>1-3</sup>

Internally Flawless	Very Very Slightly Included	Very Slightly Included	Slightly Included	Included
------------------------	--------------------------------	---------------------------	----------------------	----------



© IGI 2020, International Gemological Institute

FD - 10 20

THIS DOCUMENT WAS PRODUCED WITH THE FOLLOWING SECURITY MEASURES: SPECIAL DOCUMENT PAPER, INK SCREENS, WATERMARK BACKGROUND DESIGNS, HOLOGRAM AND OTHER SECURITY FEATURES NOT LISTED AND DO EXCEED DOCUMENT SECURITY INDUSTRY GUIDELINES

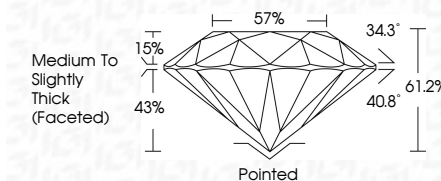
## LABORATORY GROWN DIAMOND REPORT



May 17, 2025	
IGI Report Number	LG708578873
Description	LABORATORY GROWN DIAMOND
Shape and Cutting Style	ROUND BRILLIANT
Measurements	8.78 - 8.83 X 5.38 MM

## GRADING RESULTS

Carat Weight	2.55 CARATS
Color Grade	E
Clarity Grade	VS 1
Cut Grade	IDEAL



### ADDITIONAL GRADING INFORMATION

Polish	EXCELLENT
Symmetry	EXCELLENT
Fluorescence	NONE
Inscription(s)	<del>(G)</del> LG708578873
Comments: HEARTS & ARROWS	
This Laboratory Grown Diamond was created by Chemical Vapor Deposition (CVD) growth process.	
Type IIa	



IG

May 17, 2025  
IGI Report No LG708578873  
ROUND BRILLIANT

8.78 - 8.93 X 5.38 MM	Carat Weight	2.56 CARATS
	Color Grade	E
	Clarity Grade	VS 1
	Cut Grade	IDPAL
	Depth	61.2%
	Table	57%
	Girdle	Medium to Slightly Thick (Faceted)
	Culet	Pointed
	Polish	EXCELLENT
	Symmetry	EXCELLENT
	Fluorescence	NONE
	Report #	616172873

**Comments:**  
**HEARTS & ARROWS**  
This Laboratory Grown Diamond was created by Chemical Vapor Deposition (CVD) growth process.