

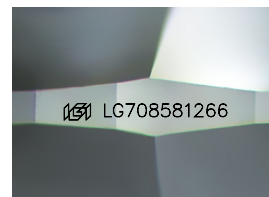
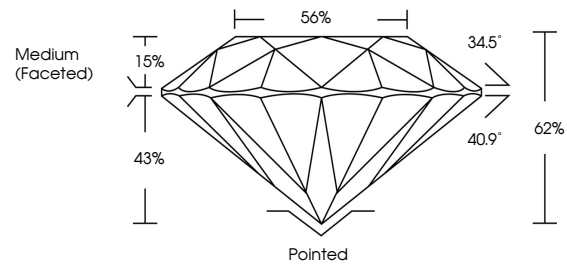


**INTERNATIONAL
GEMOLOGICAL
INSTITUTE**

ELECTRONIC COPY

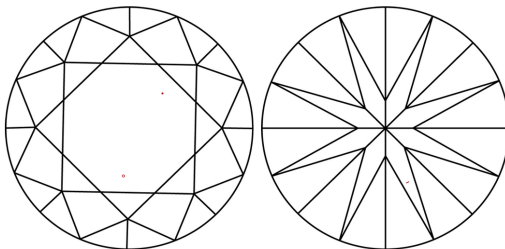
LG708581266
Report verification at igi.org

PROPORTIONS



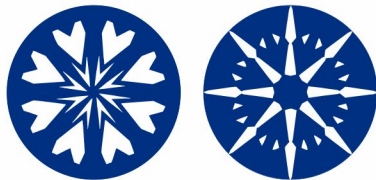
Sample Image Used

CLARITY CHARACTERISTICS



KEY TO SYMBOLS

Red symbols indicate internal characteristics.
Green symbols indicate external characteristics.



www.igi.org

COLOR

D E F G H I J Faint Very Light Light

CLARITY

IF WS¹⁻² VS¹⁻² SI¹⁻² |¹⁻³

Internally Flawless	Very Very Slightly Included	Very Slightly Included	Slightly Included	Included
------------------------	--------------------------------	---------------------------	----------------------	----------



© IGI 2020, International Gemological Institute

FD - 10 20



THIS DOCUMENT WAS PRODUCED WITH THE FOLLOWING SECURITY MEASURES: SPECIAL DOCUMENT PAPER, INK SCREENS, WATERMARK BACKGROUND DESIGNS, HOLOGRAM AND OTHER SECURITY FEATURES NOT LISTED AND DO EXCEED DOCUMENT SECURITY INDUSTRY GUIDELINES.

LABORATORY GROWN DIAMOND REPORT



May 16, 2025

IGI Report Number **LG708581266**

Description	LABORATORY GROWN DIAMOND
-------------	--------------------------

Shape and Cutting Style **ROUND BRILLIANT**

Measurements	7.36 - 7.42 X 4.59 MM
--------------	-----------------------

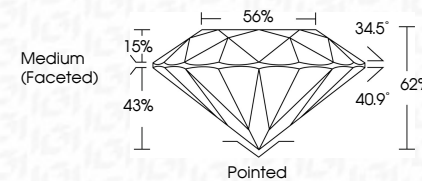
GRADING RESULTS

Carat Weight **1.54 CARAT**

Color Grade **D**

Clarity Grade VS 1

Cut Grade **IDEAL**



ADDITIONAL GRADING INFORMATION

Polish **EXCELLENT**Symmetry **EXCELLENT**Fluorescence **NONE**Inscription(s) LG70858126

Comments: HEARTS & ARROWS

This Laboratory Grown Diamond was created by Chemical Vapor Deposition (CVD) growth process.
Type IIa



IG

May 16, 2025	Report No. LG708591266
GIA Round Brilliant	1.54 CARAT
7.35 - 7.42 X 4.59 MM	D
Color Weight	Vs1
Carat Grade	IDEAL
Clarity Grade	62%
Cut Grade	56%
Depth	Medium (Faceted)
Table	
Girdle	
Quiet	Pinkish
Polish	EXCELLENT
Symmetry	EXCELLENT
Fluorescence	NONE
Inscriptions(s)	lgri LG708591266
Comments:	
HEARSH & ARONS This Laboratory Grown Diamond was created by Chemical Vapor Deposition (CVD) growth process.	