

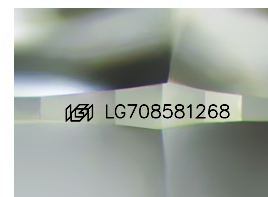
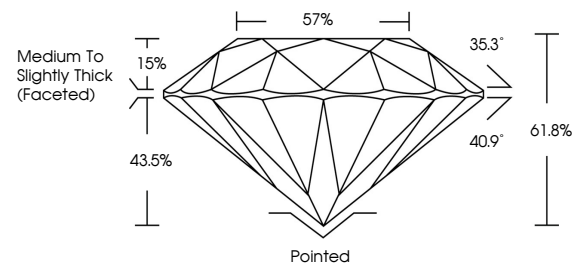


ELECTRONIC COPY

LABORATORY GROWN DIAMOND REPORT

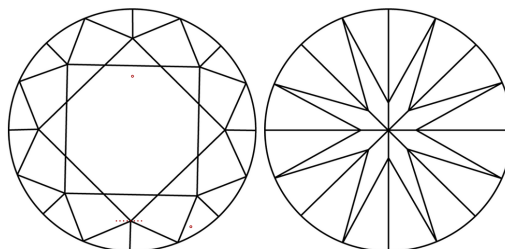
LG708581268
Report verification at igi.org

PROPORTIONS



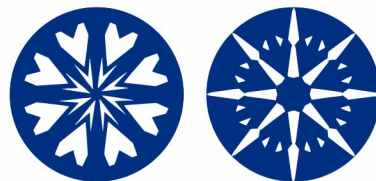
Sample Image Used

CLARITY CHARACTERISTICS



KEY TO SYMBOLS

Red symbols indicate internal characteristics.
Green symbols indicate external characteristics.



www.igi.org

LABORATORY GROWN DIAMOND REPORT



May 19, 2025

IGI Report Number **LG708581268**Description **LABORATORY GROWN DIAMOND**Shape and Cutting Style **ROUND BRILLIANT**

Measurements 8.16 - 8.19 X 5.05 MM

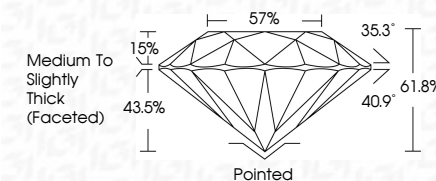
GRADING RESULTS

Carat Weight **2.06 CARATS**

Color Grade D

Clarity Grade VS 1

Cut Grade **IDEAL**



ADDITIONAL GRADING INFORMATION

Polish EXCELLENT

Symmetry **EXCELLENT**Fluorescence **NONE**Inscription(s) LG708581268

Comments: HEARTS & ARROWS

This Laboratory Grown Diamond was created by Chemical Vapor Deposition (CVD) growth process.
Type IIa



© IGI 2020, International Gemological Institute

FD - 10 20



THIS DOCUMENT WAS PRODUCED WITH THE FOLLOWING SECURITY MEASURES: SPECIAL DOCUMENT PAPER, INK SCREENS, WATERMARK, BACKGROUND DESIGNS, HOLOGRAM AND OTHER SECURITY FEATURES NOT LISTED AND DO EXCEED DOCUMENT SECURITY INDUSTRY GUIDELINES

May 19, 2025	IGI Report No. G705891268	ROUND BRILLIANT	18.16 - 19 X 5.05 MM	Carat Weight Color Grade Clarity Grade Cut Grade Depth Table Girdle Culet Polish Symmetry Fluorescence Inscriptions(s)	2.06 CARATS D VS 1 IDEAL 61.8% 57% Medium to Slightly Thick (focused) Pointed EXCELLENT EXCELLENT NONE 4991 G705891268	Comments: This is a Natural Lab-Grown Diamond was created by Chemical Vapor Deposition (CVD) growth process. Type IIa
--------------	---------------------------	-----------------	----------------------	---	--	--