



ELECTRONIC COPY

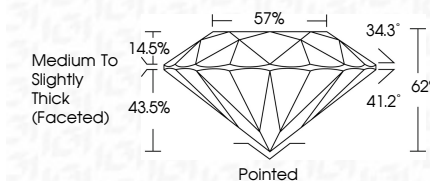
LG709530986 Report verification at igi.org



May 20, 2025 IGI Report Number LG709530986 Description LABORATORY GROWN DIAMOND Shape and Cutting Style ROUND BRILLIANT Measurements 6.38 - 6.46 X 3.97 MM

GRADING RESULTS

Carat Weight 1.00 CARAT Color Grade D Clarity Grade VVS 1 Cut Grade IDEAL



ADDITIONAL GRADING INFORMATION

Polish EXCELLENT Symmetry EXCELLENT Fluorescence NONE Inscription(s) LG709530986 Comments: HEARTS & ARROWS As Grown - No indication of post-growth treatment. This Laboratory Grown Diamond was created by High Pressure High Temperature (HPHT) growth process. Type II



May 20, 2025 IGI Report No LG709530986 ROUND BRILLIANT 1.00 CARAT D 6.38 - 6.46 X 3.97 MM Color Grade IDEAL Clarity Grade VVS 1 Depth 62% Table 57% Girdle Medium To Slightly Thick (Faceted) Pavilion EXCELLENT Symmetry EXCELLENT Fluorescence NONE Inscriptions) IGI LG709530986 Comments: HEARTS & ARROWS As Grown - No indication of post-growth treatment. This Laboratory Grown Diamond was created by High Pressure High Temperature (HPHT) growth process. Type II

May 20, 2025 IGI Report Number LG709530986 Description LABORATORY GROWN DIAMOND Shape and Cutting Style ROUND BRILLIANT Measurements 6.38 - 6.46 X 3.97 MM

GRADING RESULTS

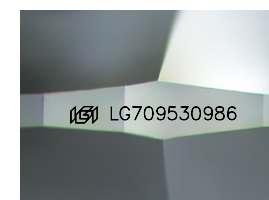
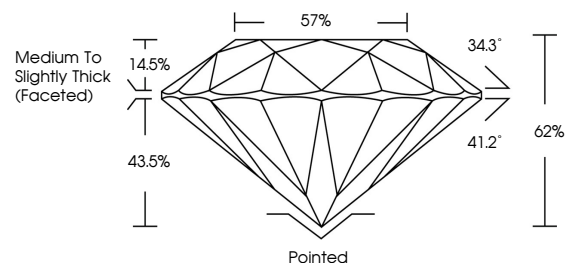
Carat Weight 1.00 CARAT Color Grade D Clarity Grade VVS 1 Cut Grade IDEAL

ADDITIONAL GRADING INFORMATION

Polish EXCELLENT Symmetry EXCELLENT Fluorescence NONE Inscription(s) LG709530986

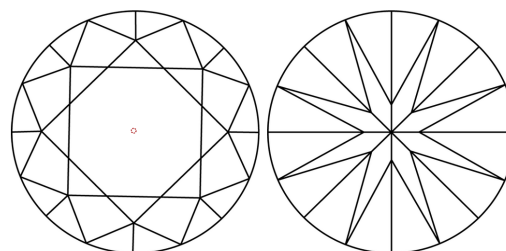
Comments: HEARTS & ARROWS As Grown - No indication of post-growth treatment. This Laboratory Grown Diamond was created by High Pressure High Temperature (HPHT) growth process. Type II

PROPORTIONS



Sample Image Used

CLARITY CHARACTERISTICS



KEY TO SYMBOLS

Red symbols indicate internal characteristics. Green symbols indicate external characteristics.



COLOR

D E F G H I J Faint Very Light Light

CLARITY

IF VVS 1-2 VS 1-2 SI 1-2 I 1-3 Internally Flawless Very Very Slightly Included Very Slightly Included Slightly Included Included

