

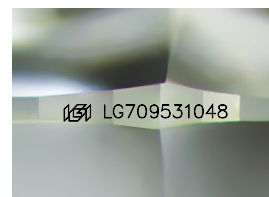
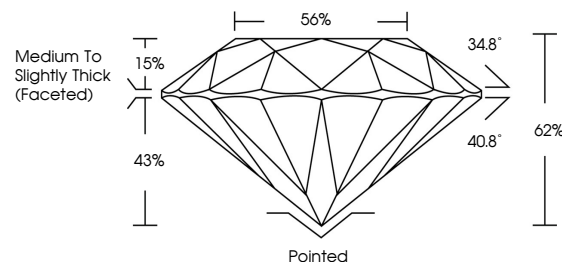


ELECTRONIC COPY

LABORATORY GROWN DIAMOND REPORT

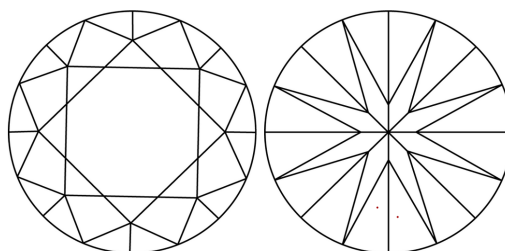
LG709531048
Report verification at lgi.org

PROPORTIONS



Sample Image Used

CLARITY CHARACTERISTICS



KEY TO SYMBOLS

Red symbols indicate internal characteristics.
Green symbols indicate external characteristics.



www.igi.org

LABORATORY GROWN DIAMOND REPORT



May 20, 2025

IGI Report Number **LG709531048**

Description **LABORATORY GROWN DIAMOND**Shape and Cutting Style **ROUND BRILLIANT**

Measurements 8.10 - 8.13 X 5.03 MM

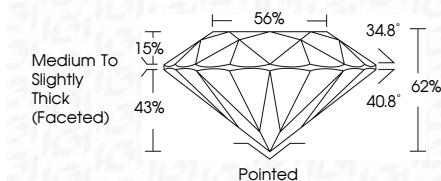
GRADING RESULTS

Carat Weight **2.04 CARATS**

Color Grade	D
-------------	---

Clarity Grade **VVS 1**

Cut Grade **IDEAL**



ADDITIONAL GRADING INFORMATION

Polish **EXCELLENT**Symmetry **EXCELLENT**Fluorescence **NONE**Inscription(s) LG709531048

Comments: HEARTS & ARROWS

As Grown - No indication of post-growth treatment.
This Laboratory Grown Diamond was created by High
Pressure High Temperature (HPHT) growth process.
Type II



© IGI 2020, International Gemological Institute

FD - 10 20



THIS DOCUMENT WAS PRODUCED WITH THE FOLLOWING SECURITY MEASURES: SPECIAL DOCUMENT PAPER, INK SCREENS, WATERMARK, BACKGROUND DESIGNS, HOLOGRAM AND OTHER SECURITY FEATURES NOT LISTED AND DO EXCEED DOCUMENT SECURITY INDUSTRY GUIDELINES

May 20, 2026	2.04 CARATS	D	VVS 1	IDEAL	50%	Medium to Slightly Thick (Faceted)	Poited	EXCELLENT	NONE	(#) LG709531048	Comments:
G Report No.LG709531048	Color Weight	Carat Grade	Clarity Grade	Cut Grade	Table	Proportions	Symmetry	Fluorescence	Inscriptions(s)	As Grown - No Indication of post-growth treatment.	
ROUND BRILLIANT	10 - 11.3 X 6.03 MM									Laboratory created by High Pressure High temperature (HPHT) growth process.	