

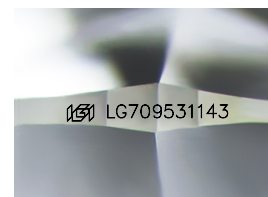
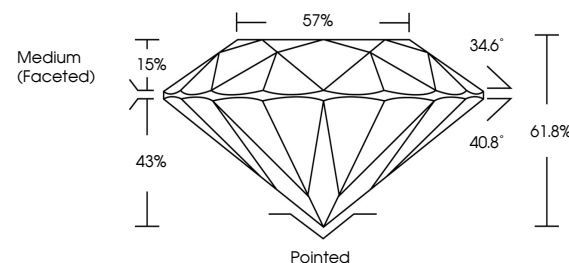


ELECTRONIC COPY

LABORATORY GROWN DIAMOND REPORT

LG709531143
Report verification at igi.org

PROPORTIONS



Sample Image Used

CLARITY CHARACTERISTICS



KEY TO SYMBOLS

Red symbols indicate internal characteristics.
Green symbols indicate external characteristics.



www.igi.org

COLOR

D E F G H I J Faint Very Light Light

CLARITY

IF WS¹⁻² VS¹⁻² SI¹⁻² |¹⁻³

Internally Flawless	Very Very Slightly Included	Very Slightly Included	Slightly Included	Included
------------------------	--------------------------------	---------------------------	----------------------	----------



© IGI 2020, International Gemological Institute

FD - 10 20

THIS DOCUMENT WAS PRODUCED WITH THE FOLLOWING SECURITY MEASURES: SPECIAL DOCUMENT PAPER, INK SCREENS, WATERMARK, BACKGROUND DESIGNS, HOLOGRAM AND OTHER SECURITY FEATURES NOT LISTED AND DO EXCEED DOCUMENT SECURITY INDUSTRY GUIDELINES

LABORATORY GROWN DIAMOND REPORT



May 22, 2025

IGI Report Number **LG709531143**Description **LABORATORY GROWN DIAMOND**Shape and Cutting Style **ROUND BRILLIANT**

Measurements	9.36 - 9.43 X 5.80 MM
--------------	-----------------------

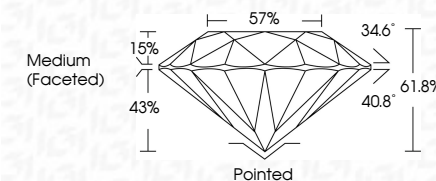
GRADING RESULTS

Carat Weight **3.14 CARATS**

Color Grade

Clarity Grade **INTERNALLY FLAWLESS**

Cut Grade **IDEAL**



ADDITIONAL GRADING INFORMATION

Polish **EXCELLENT**Symmetry **EXCELLENT**Fluorescence **NONE**Inscription(s) LG709531143

Comments: HEARTS & ARROWS

As Grown - No indication of post-growth treatment.
This Laboratory Grown Diamond was created by High Pressure High Temperature (HPHT) growth process.
Type II



May 22, 2025	3.14 CARATS	Pointed	<p>Comments:</p> <p>• HARS & ARROWS • No indication of post-growth • No inclusions • This Laboratory Grown Diamond was created by High Pressure High Temperature (HPHT) growth process.</p>
GI Report No. LG709631143	D	EXCELLENT	
ROUND BRILLIANT	LF	EXCELLENT	
	IDEAL	NONE	
	61.8%	169 LG709631143	
	57%	Medium (Faceted)	
		Culet	
		Polish	
		Symmetry	
		Fluorescence	
		Inscriptions(s)	