



ELECTRONIC COPY

LABORATORY GROWN DIAMOND REPORT

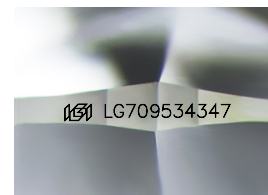
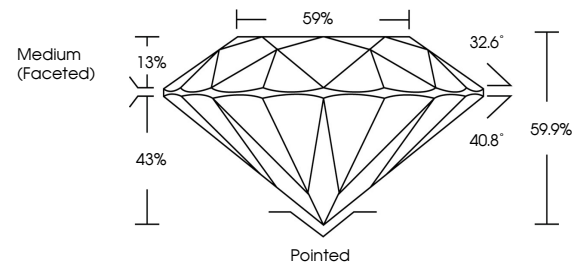
LG709534347
Report verification at igi.org

May 20, 2025	
IGI Report Number	LG709534347
Description	LABORATORY GROWN DIAMOND
Shape and Cutting Style	ROUND BRILLIANT
Measurements	7.88 - 7.93 X 4.73 MM
GRADING RESULTS	
Carat Weight	1.81 CARAT
Color Grade	D
Clarity Grade	VS 1
Cut Grade	EXCELLENT

ADDITIONAL GRADING INFORMATION

Polish	EXCELLENT
Symmetry	EXCELLENT
Fluorescence	NONE
Inscription(s)	 LG709534347
Comments: This Laboratory Grown Diamond was created by Chemical Vapor Deposition (CVD) growth process.	
Type IIa	

PROPORTIONS



Sample Image Used

COLOR

D E F G H I J Faint Very Light Light

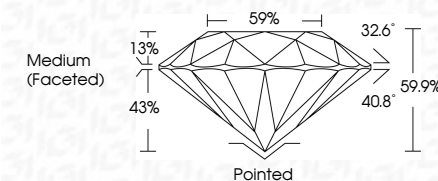
CLARITY

IF	VS ¹⁻²	VS ¹⁻²	SI ¹⁻²	I ¹⁻³
Internally Flawless	Very Very Slightly Included	Very Slightly Included	Slightly Included	Included

LABORATORY GROWN DIAMOND REPORT



May 20, 2025	
IGI Report Number	LG709534347
Description	LABORATORY GROWN DIAMOND
Shape and Cutting Style	ROUND BRILLIANT
Measurements	7.88 - 7.93 X 4.73 MM
GRADING RESULTS	
Carat Weight	1.81 CARAT
Color Grade	D
Clarity Grade	VS 1
Cut Grade	EXCELLENT



ADDITIONAL GRADING INFORMATION

Polish	EXCELLENT
Symmetry	EXCELLENT
Fluorescence	NONE
Inscription(s)	 LG709534347
<p>Comments: This Laboratory Grown Diamond was created by Chemical Vapor Deposition (CVD) growth process.</p> <p>Type IIa</p>	



© IGI 2020, International Gemological Institute

FD - 10 20



THIS DOCUMENT WAS PRODUCED WITH THE FOLLOWING SECURITY MEASURES: SPECIAL DOCUMENT PAPER, INK SCREENS, WATERMARK, BACKGROUND DESIGNS, HOLOGRAM, AND OTHER SECURITY FEATURES NOT LISTED AND DO EXCEED DOCUMENT SECURITY INDUSTRY GUIDELINES.

www.igi.org

May 20, 2025
 IGI Report No LG709534347
 ROUND BRILLIANT

7.88 - 7.93 X 4.73 MM
1.81 CARAT

7.88 - 7.93 X 4.73 MM
1.81 CARAT

Color Grade	D
-------------	---

Clarity Grade	VS 1
---------------	------

EXCELLENT

Depth	59.9%
Table	59%

Girdle

	Pointed	EXCELLENT
Culet		
Polish		

Symmetry

Fluorescence	NONE
420 670059487	

1291 257330047

Comments:
This Laboratory Grown Diamond was

created by Chemical Vapor Deposition (CVD) growth process.

Type IIa