

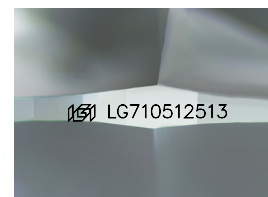
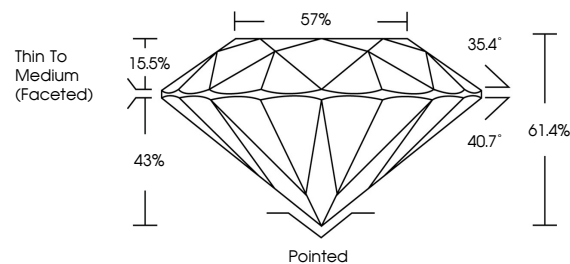


ELECTRONIC COPY

LABORATORY GROWN DIAMOND REPORT

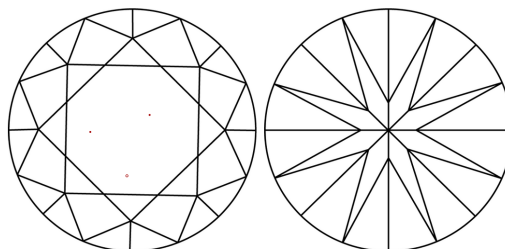
LG710512513
Report verification at igi.org

PROPORTIONS



Sample Image Used

CLARITY CHARACTERISTICS



KEY TO SYMBOLS

Red symbols indicate internal characteristics.
Green symbols indicate external characteristics.

COLOR

D E F G H I J Faint Very Light Light

CLARITY

IF VS¹⁻² VS¹⁻² S¹⁻² |¹⁻³

Internally Flawless	Very Very Slightly Included	Very Slightly Included	Slightly Included	Included
------------------------	--------------------------------	---------------------------	----------------------	----------



May 22, 2025

IGI Report Number **LG710512513**

Description **LABORATORY GROWN DIAMOND**Shape and Cutting Style **ROUND BRILLIANT**

Measurements **7.72 - 7.77 X 4.75 MM**

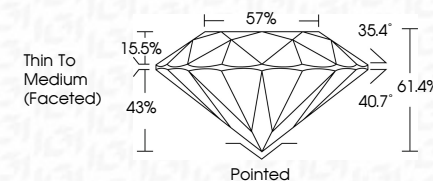
GRADING RESULTS

Carat Weight **1.73 CARAT**

Color Grade D

Clarity Grade VS 1

Cut Grade **IDEAL**



ADDITIONAL GRADING INFORMATION

Polish EXCELLENT

Symmetry **EXCELLENT**Fluorescence **NONE**Inscription(s) LG710512513

Comments: This Laboratory Grown Diamond was created by Chemical Vapor Deposition (CVD) growth process.
Type IIa



© IGI 2020, International Gemological Institute

FD - 10 20

www.igi.org



THIS DOCUMENT WAS PRODUCED WITH THE FOLLOWING SECURITY MEASURES: SPECIAL DOCUMENT PAPER, INK SCREENS, WATERMARK, BACKGROUND DESIGNS, HOLOGRAM AND OTHER SECURITY FEATURES NOT LISTED AND DO EXCEED DOCUMENT SECURITY INDUSTRY GUIDELINE

May 22, 2025
GI Report No LG710512513
ROUND BRILLIANT

1.72 - 1.77 X 4.75 MM		1.73 CARAT D
Carat Weight	VS 1	VS 1
Color Grade	Colorless	Colorless
Clarity Grade	VS 1	VS 1
Cut Grade	Very Good	Very Good
Depth	61.4%	61.4%
Table	57%	57%
Girdle	Thin to Medium	Thin to Medium
Culet	Pointed	Pointed
Polish	Excellent	Excellent
Symmetry	Excellent	Excellent
Fluorescence	None	None

Comments:
This Laboratory Grown Diamond was
created by Chemical Vapor Deposition
(CVD) growth process.