



ELECTRONIC COPY

LG710513266
Report verification at igi.org



May 20, 2025

IGI Report Number **LG710513266**

Description **LABORATORY GROWN DIAMOND**

Shape and Cutting Style **ROUND BRILLIANT**

Measurements **6.45 - 6.48 X 4.02 MM**

GRADING RESULTS

Carat Weight **1.04 CARAT**

Color Grade **F**

Clarity Grade **VVS 2**

Cut Grade **IDEAL**

May 20, 2025
IGI Report Number **LG710513266**
Description **LABORATORY GROWN DIAMOND**
Shape and Cutting Style **ROUND BRILLIANT**
Measurements **6.45 - 6.48 X 4.02 MM**

GRADING RESULTS

Carat Weight **1.04 CARAT**

Color Grade **F**

Clarity Grade **VVS 2**

Cut Grade **IDEAL**

ADDITIONAL GRADING INFORMATION

Polish **EXCELLENT**

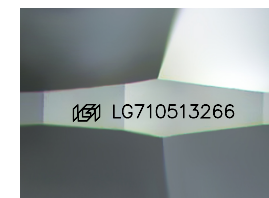
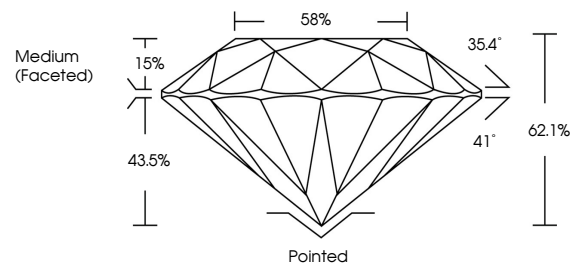
Symmetry **EXCELLENT**

Fluorescence **NONE**

Inscription(s) **IGI LG710513266**

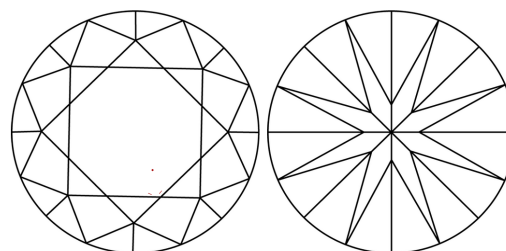
Comments: This Laboratory Grown Diamond was created by Chemical Vapor Deposition (CVD) growth process.
Type IIa

PROPORTIONS



Sample Image Used

CLARITY CHARACTERISTICS



KEY TO SYMBOLS

Red symbols indicate internal characteristics.
Green symbols indicate external characteristics.

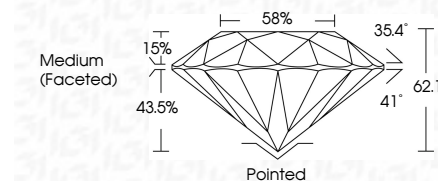
COLOR

D E F G H I J Faint Very Light Light

CLARITY

IF WS¹⁻² VS¹⁻² SI¹⁻² I¹⁻³

Internally Flawless Very Very Slightly Included Very Slightly Included Slightly Included Included



ADDITIONAL GRADING INFORMATION

Polish **EXCELLENT**

Symmetry **EXCELLENT**

Fluorescence **NONE**

Inscription(s) **IGI LG710513266**

Comments: This Laboratory Grown Diamond was created by Chemical Vapor Deposition (CVD) growth process.
Type IIa



IGI



| | | | | | | | | |
|-----------------|---------------------------|----------------|-------|----------------|-----------------|-----------|------|------------------|
| May 20, 2025 | IGI Report No LG710513266 | 1.04 CARAT | F | Pointed | EXCELLENT | EXCELLENT | NONE | IGI LG710513266 |
| ROUND BRILLIANT | 6.45 - 6.48 X 4.02 MM | Color Grade | VVS 2 | Depth | IDEAL | 62.1% | 58% | Medium (Faceted) |
| | | Clarity Grade | VVS 2 | Cut Grade | IDEAL | 62.1% | 58% | Medium (Faceted) |
| | | Table | 15% | Grade | IDEAL | 62.1% | 58% | Medium (Faceted) |
| | | Crown Angle | 35.4° | Polish | EXCELLENT | | | Pointed |
| | | Pavilion Angle | 41° | Symmetry | EXCELLENT | | | EXCELLENT |
| | | | | Fluorescence | NONE | | | NONE |
| | | | | Inscription(s) | IGI LG710513266 | | | IGI LG710513266 |

Comments: This Laboratory Grown Diamond was created by Chemical Vapor Deposition (CVD) growth process.
Type IIa