

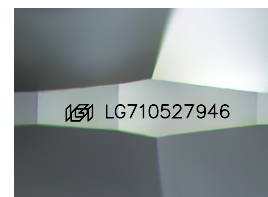
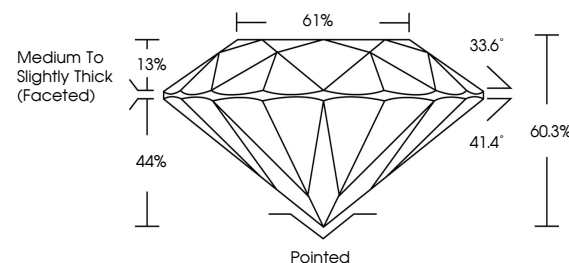


**ELECTRONIC COPY**

## LABORATORY GROWN DIAMOND REPORT

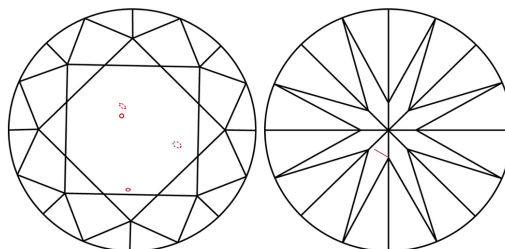
LG710527946  
Report verification at [igi.org](https://igi.org)

## PROPORTIONS



Sample Image Used

## CLARITY CHARACTERISTICS



## KEY TO SYMBOLS

Red symbols indicate internal characteristics.  
Green symbols indicate external characteristics.

## COLOR

D E F G H I J Faint Very Light Light

## CLARITY

IF WS<sup>1-2</sup> VS<sup>1-2</sup> SI<sup>1-2</sup> |<sup>1-3</sup>

Internally Flawless	Very Very Slightly Included	Very Slightly Included	Slightly Included	Included
------------------------	--------------------------------	---------------------------	----------------------	----------



May 24, 2025

IGI Report Number **LG710527946**Description **LABORATORY GROWN DIAMOND**Shape and Cutting Style **ROUND BRILLIANT**

Measurements 7.28 - 7.31 X 4.40 MM

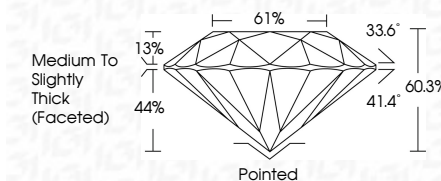
## GRADING RESULTS

Carat Weight 1.42 CARAT

Color Grade E

Clarity Grade SI 1

Cut Grade **EXCELLENT**



### ADDITIONAL GRADING INFORMATION

Polish **EXCELLENT**Symmetry **EXCELLENT**Fluorescence **NONE**Inscription(s)  LG710527946

Comments: This Laboratory Grown Diamond was created by Chemical Vapor Deposition (CVD) growth process.  
Type IIa



© IGI 2020, International Gemological Institute

FD - 10 20



THIS DOCUMENT WAS PRODUCED WITH THE FOLLOWING SECURITY MEASURES: SPECIAL DOCUMENT PAPER, INK SCREENS, WATERMARK, BACKGROUND DESIGNS, HOLOGRAM AND OTHER SECURITY FEATURES NOT LISTED AND DO EXCEED DOCUMENT SECURITY INDUSTRY GUIDELINES

**www.igi.org**

May 24, 2005	Carat Weight	1.42 CARAT
Report No. LG710827946	Color Grade	E
ROUND BRILLIANT	Clarity Grade	S I
	Cut Grade	EXCELLENT
	Depth	60.3%
	Table	61%
	Medium To Slighly Thick (rounded)	
	Grades	
	Cluef	Pointed
	Polsh	EXCELLENT
	Symmetry	EXCELLENT
	Fluorescence	NONE
	Inscriptions(s)	1691 LG710827946
	Comments:	
	The Laboratory Grown Diamond was created by Chemical Vapor Deposition (CVD) growth process.	
	Type IIA	