



# INTERNATIONAL GEMOLOGICAL INSTITUTE

ELECTRONIC COPY



May 21, 2025

IGI Report Number LG710546696

ROUND BRILLIANT

LABORATORY GROWN DIAMOND

6.38 - 6.43 X 4.00 MM

Carat Weight 0.99 CARAT

Color Grade E

Clarity Grade VS 2

Cut Grade IDEAL

Polish EXCELLENT

Symmetry EXCELLENT

Fluorescence NONE

Inscription(s) IGI LG710546696

Comments: This Laboratory Grown Diamond was created by Chemical Vapor Deposition (CVD) growth process. Type IIa

## LABORATORY GROWN DIAMOND REPORT

May 21, 2025

IGI Report Number

LG710546696

Description

LABORATORY GROWN DIAMOND

Shape and Cutting Style

ROUND BRILLIANT

Measurements

6.38 - 6.43 X 4.00 MM

### GRADING RESULTS

Carat Weight

0.99 CARAT

Color Grade

E

Clarity Grade

VS 2

Cut Grade

IDEAL

### ADDITIONAL GRADING INFORMATION

Polish

EXCELLENT

Symmetry

EXCELLENT

Fluorescence

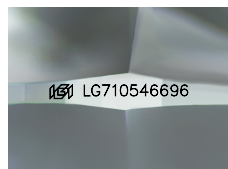
NONE

Inscription(s)

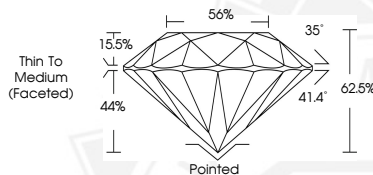
IGI LG710546696

Comments: This Laboratory Grown Diamond was created by Chemical Vapor Deposition (CVD) growth process.

Type IIa



Sample Image Used



May 21, 2025

IGI Report Number LG710546696

ROUND BRILLIANT

LABORATORY GROWN DIAMOND

6.38 - 6.43 X 4.00 MM

Carat Weight 0.99 CARAT

Color Grade E

Clarity Grade VS 2

Cut Grade IDEAL

Polish EXCELLENT

Symmetry EXCELLENT

Fluorescence NONE

Inscription(s) IGI LG710546696

Comments: This Laboratory Grown Diamond was created by Chemical Vapor Deposition (CVD) growth process. Type IIa



THIS DOCUMENT WAS PRODUCED WITH THE FOLLOWING SECURITY MEASURES: SPECIAL DOCUMENT PAPER, INK SCREENS, WATERMARK, BACKGROUND DESIGNS, HOLOGRAM AND OTHER SECURITY FEATURES NOT LISTED AND DO EXCEED DOCUMENT SECURITY INDUSTRY GUIDELINES.

For terms & conditions and to verify this report, please visit [www.igi.org](http://www.igi.org)