



**ELECTRONIC COPY**

## LABORATORY GROWN DIAMOND REPORT

May 29, 2025	
IGI Report Number	LG710550948
Description	LABORATORY GROWN DIAMOND
Shape and Cutting Style	ROUND BRILLIANT
Measurements	10.27 - 10.31 X 6.23 MM

## GRADING RESULTS

Carat Weight	4.05 CARATS
Color Grade	F
Clarity Grade	VS 1
Cut Grade	IDEAL

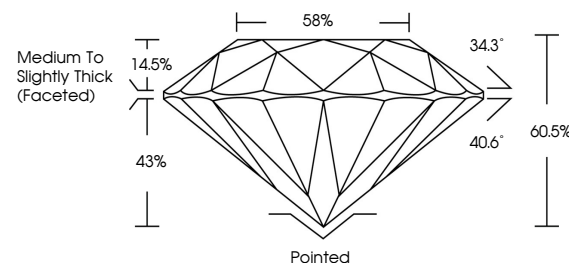
### ADDITIONAL GRADING INFORMATION

Polish	EXCELLENT
Symmetry	EXCELLENT
Fluorescence	NONE
Inscription(s)	 LG710550948

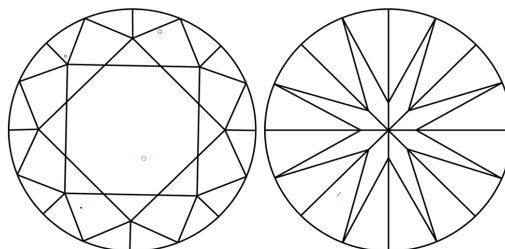
Comments: HEARTS & ARROWS  
This Laboratory Grown Diamond was created by  
Chemical Vapor Deposition (CVD) growth process.  
Type IIa

LG710550948  
Report verification at [igi.org](https://igi.org)

## PROPORTIONS



## CLARITY CHARACTERISTICS

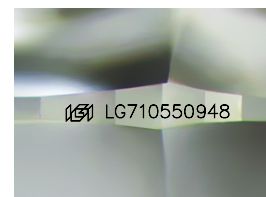


## KEY TO SYMBOLS

Red symbols indicate internal characteristics.  
Green symbols indicate external characteristics.



**www.igi.org**



Sample Image Used

## COLOR

D E F G H I J Faint Very Light Light

## CLARITY

IF      VWS<sup>1-2</sup>      VS<sup>1-2</sup>      SI<sup>1-2</sup>      I<sup>1-3</sup>

Internally Flawless	Very Very Slightly Included	Very Slightly Included	Slightly Included	Included
------------------------	--------------------------------	---------------------------	----------------------	----------



© IGI 2020, International Gemological Institute

FD - 10 20

THIS DOCUMENT WAS PRODUCED WITH THE FOLLOWING SECURITY MEASURES: SPECIAL DOCUMENT PAPER, INK SCREENS, WATERMARK BACKGROUND DESIGNS, HOLOGRAM AND OTHER SECURITY FEATURES NOT LISTED AND DO EXCEED DOCUMENT SECURITY INDUSTRY GUIDELINES

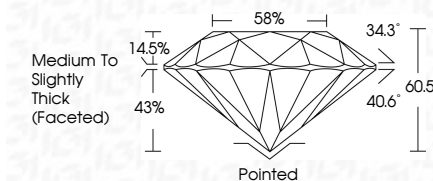
## LABORATORY GROWN DIAMOND REPORT



May 29, 2025	
IGI Report Number	LG710550948
Description	LABORATORY GROWN DIAMOND
Shape and Cutting Style	ROUND BRILLIANT
Measurements	10.27 - 10.31 X 6.23 MM

## GRADING RESULTS

Carat Weight	4.05 CARATS
Color Grade	F
Clarity Grade	VS 1
Cut Grade	IDEAL



### ADDITIONAL GRADING INFORMATION

Polish	EXCELLENT
Symmetry	EXCELLENT
Fluorescence	NONE
Inscription(s)	<del>(G)</del> LG710550948
Comments: HEARTS & ARROWS	
This Laboratory Grown Diamond was created by Chemical Vapor Deposition (CVD) growth process.	
Type IIa	



May 29, 2025	Report No. G71055948
ROUND BRILLIANT	
10.27 - 10.31 X 6.23 MM	
Carat Weight	4.05 CARATS
Color Grade	F
Clarity Grade	VS 1
Cut Grade	IDEAL
Depth	60.6%
Table	86%
Girdle	Medium to Slightly Thick (Faceted)
Culet	Pointed
Polish	EXCELLENT
Symmetry	EXCELLENT
Fluorescence	NONE
Identification(s)	IGI L571055948
Comments:	
HEARTS & ARROWS This Laboratory Crown Diamond was created by Chemical Vapor Deposition (CVD) growth process.	

**Comments:**  
**HEARTS & ARROWS**  
This Laboratory Grown Diamond was  
created by Chemical Vapor Deposition  
(CVD) growth process.