

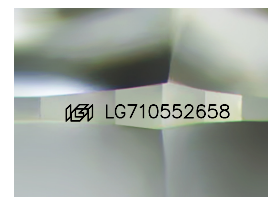
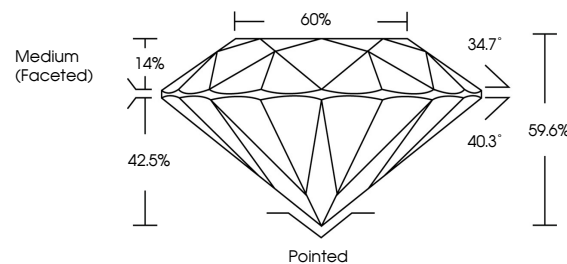


ELECTRONIC COPY

LABORATORY GROWN DIAMOND REPORT

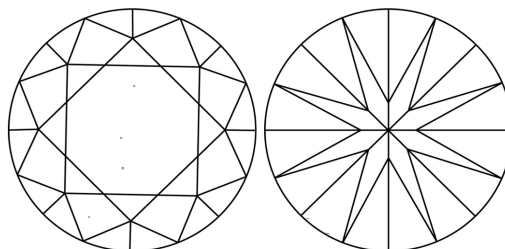
LG710552658
Report verification at igi.org

PROPORTIONS



Sample Image Used

CLARITY CHARACTERISTICS



KEY TO SYMBOLS

Red symbols indicate internal characteristics.
Green symbols indicate external characteristics.

COLOR

D E F G H I J Faint Very Light Light

CLARITY

IF WS¹⁻² VS¹⁻² SI¹⁻² |¹⁻³

| | | | | |
|------------------------|--------------------------------|---------------------------|----------------------|----------|
| Internally Flawless | Very Very Slightly Included | Very Slightly Included | Slightly Included | Included |
|------------------------|--------------------------------|---------------------------|----------------------|----------|

LABORATORY GROWN DIAMOND REPORT



June 11, 2025

IGI Report Number **LG710552658**Description **LABORATORY GROWN DIAMOND**Shape and Cutting Style **ROUND BRILLIANT**

Measurements 8.78 - 8.86 X 5.25 MM

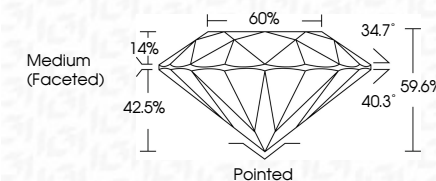
GRADING RESULTS

Carat Weight **2.51 CARATS**

Color Grade **FANCY VIVID PINK**

Clarity Grade VS 1

Cut Grade **IDEAL**



ADDITIONAL GRADING INFORMATION

Polish **EXCELLENT**Symmetry **EXCELLENT**

Fluorescence SLIGHT

Inscription(s) LG710552658

Comments: This Laboratory Grown Diamond was created by Chemical Vapor Deposition (CVD) growth process.

Indications of post-growth treatment.



| | | | | | | | | | | | | | |
|-----------------|--------------------------|------------------|-------------|---------------|-------|-------|-------------------|---------|-----------|-----------|--------------|-------------------|---|
| June 11, 2025 | GI Report No. G710552658 | 2.51 CARATS | Vs 1 | IDEAL | 56.0% | 60% | Medium (Face-set) | Pointed | Excellent | Excellent | Slight | 491 1671 10552658 | Comments: Created by Crown Diamond Inc. Graded by Certified Vacor Deposition (CVD) growth process. Indications of post-growth treatment. |
| ROUND BRILLIANT | 7/8 - 6.86 x 5.25 MM | FANCY VIVID PINK | Color Grade | Clarity Grade | Depth | Table | Girdle | Culet | Polish | Symmetry | Fluorescence | Inscriptions(s) | |

