

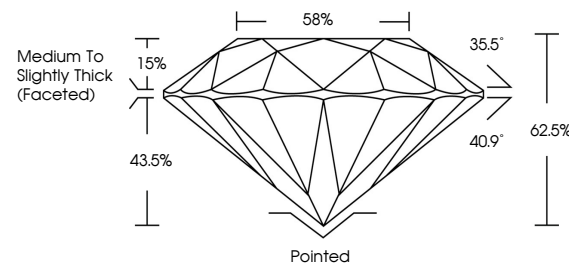


**ELECTRONIC COPY**

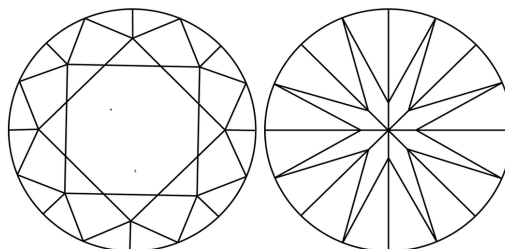
## LABORATORY GROWN DIAMOND REPORT

LG710561233  
Report verification at [igi.org](https://igi.org)

## PROPORTIONS



## CLARITY CHARACTERISTICS



## KEY TO SYMBOLS

Red symbols indicate internal characteristics.  
Green symbols indicate external characteristics.

## COLOR

D E F G H I J Faint Very Light Light

## CLARITY

IF WS<sup>1-2</sup> VS<sup>1-2</sup> SI<sup>1-2</sup> |<sup>1-3</sup>

Internally Flawless	Very Very Slightly Included	Very Slightly Included	Slightly Included	Included
------------------------	--------------------------------	---------------------------	----------------------	----------

## LABORATORY GROWN DIAMOND REPORT



June 2, 2025

IGI Report Number LG710561233

Description **LABORATORY GROWN DIAMOND**Shape and Cutting Style **ROUND BRILLIANT**

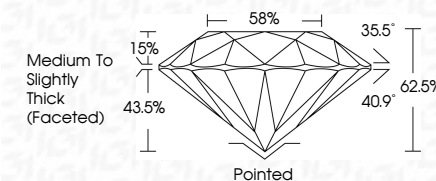
Measurements 10.88 - 10.94 X 6.83 MM

## GRADING RESULTS

Carat Weight **5.07 CARATS**

Color Grade **E**Clarity Grade **VVS 2**

Cut Grade **IDEAL**



### ADDITIONAL GRADING INFORMATION

Polish **EXCELLENT**Symmetry **EXCELLENT**Fluorescence **NONE**Inscription(s)  LG710561233

Comments: This Laboratory Grown Diamond was created by Chemical Vapor Deposition (CVD) growth process.  
Type IIa



© IGI 2020, International Gemological Institute

FD - 10 20

**www.igi.org**

THIS DOCUMENT WAS PRODUCED WITH THE FOLLOWING SECURITY MEASURES: SPECIAL DOCUMENT PAPER, INK SCREENS, WATERMARK BACKGROUND DESIGNS, HOLOGRAM AND OTHER SECURITY FEATURES NOT LISTED AND DO EXCEED DOCUMENT SECURITY INDUSTRY GUIDELINES

June 2, 2025  
IGI Report No LG710561233  
ROUND BRILLIANT

10.98 x 10.94 x 6.83 MM	Carat Weight	5.07 CARATS
	Color Grade	E
	Clarity Grade	VS 2
	Cut Grade	IDEAL
	Depth	62.5%
	Table	58%
	Girdle	Medium to Slightly Thick (Faceted)
	Culet	Pointed
	Polish	EXCELLENT
	Symmetry	EXCELLENT
	Fluorescence	NONE

**Comments:**  
This Laboratory Grown Diamond was created by Chemical Vapor Deposition (CVD) growth process.