



**ELECTRONIC COPY**

## LABORATORY GROWN DIAMOND REPORT

|                         |                          |
|-------------------------|--------------------------|
| May 26, 2025            |                          |
| IGI Report Number       | LG710569925              |
| Description             | LABORATORY GROWN DIAMOND |
| Shape and Cutting Style | ROUND BRILLIANT          |
| Measurements            | 8.07 - 8.11 X 5.00 MM    |

## GRADING RESULTS

|               |             |
|---------------|-------------|
| Carat Weight  | 2.01 CARATS |
| Color Grade   | D           |
| Clarity Grade | VVS 1       |
| Cut Grade     | IDEAL       |

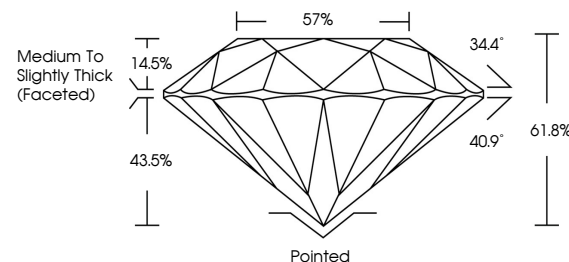
### ADDITIONAL GRADING INFORMATION

|                |                 |
|----------------|-----------------|
| Polish         | EXCELLENT       |
| Symmetry       | EXCELLENT       |
| Fluorescence   | NONE            |
| Inscription(s) | 151 LG710569925 |

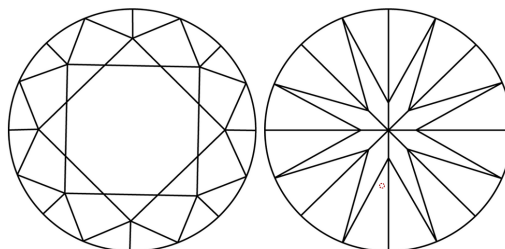
Comments: HEARTS & ARROWS  
As Grown - No indication of post-growth treatment.  
This Laboratory Grown Diamond was created by High  
Pressure High Temperature (HPHT) growth process.  
Type II

LG710569925  
Report verification at [lgi.org](https://lgi.org)

## PROPORTIONS



## CLARITY CHARACTERISTICS

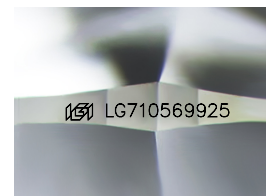


### KEY TO SYMBOLS

Red symbols indicate internal characteristics.  
Green symbols indicate external characteristics.



**www.igi.org**



Sample Image Used

## COLOR

D E F G H I J Faint Very Light Light

## CLARITY

IF      VWS<sup>1-2</sup>      VS<sup>1-2</sup>      SI<sup>1-2</sup>      I<sup>1-3</sup>

| Internally<br>Flawless | Very Very<br>Slightly Included | Very<br>Slightly Included | Slightly<br>Included | Included |
|------------------------|--------------------------------|---------------------------|----------------------|----------|
|------------------------|--------------------------------|---------------------------|----------------------|----------|



© IGI 2020, International Gemological Institute

FD - 10 20

THIS DOCUMENT WAS PRODUCED WITH THE FOLLOWING SECURITY MEASURES: SPECIAL DOCUMENT PAPER, INK SCREENS, WATERMARK, BACKGROUND DESIGNS, HOLOGRAM AND OTHER SECURITY FEATURES NOT LISTED AND DO EXCEED DOCUMENT SECURITY INDUSTRY GUIDELINE

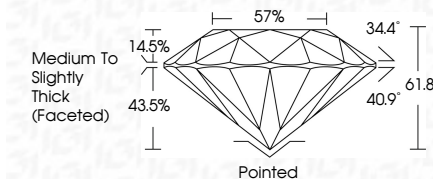
## LABORATORY GROWN DIAMOND REPORT



|                         |                          |
|-------------------------|--------------------------|
| May 26, 2025            |                          |
| IGI Report Number       | LG710569925              |
| Description             | LABORATORY GROWN DIAMOND |
| Shape and Cutting Style | ROUND BRILLIANT          |
| Measurements            | 8.07 - 8.11 X 5.00 MM    |

## GRADING RESULTS

|               |             |
|---------------|-------------|
| Carat Weight  | 2.01 CARATS |
| Color Grade   | D           |
| Clarity Grade | VVS 1       |
| Cut Grade     | IDEAL       |



### ADDITIONAL GRADING INFORMATION

|                |                 |
|----------------|-----------------|
| Polish         | EXCELLENT       |
| Symmetry       | EXCELLENT       |
| Fluorescence   | NONE            |
| Inscription(s) | 103 LG710569925 |

Comments: HEARTS & ARROWS  
As Grown - No indication of post-growth treatment.  
This Laboratory Grown Diamond was created by High  
Pressure High Temperature (HPHT) growth process.  
Type II



IG

|                       |                                    |
|-----------------------|------------------------------------|
| May 24, 2025          | 2.01 CARATS                        |
| Report No. L271054925 |                                    |
| ROUND BRILLIANT       |                                    |
| G1                    |                                    |
| 0.07 - 0.11 X 5.00 MM |                                    |
| Carat Weight          |                                    |
| Color Grade           | D                                  |
| Clarity Grade         | VVS 1                              |
| Cut Grade             | IDEAL                              |
| Depth                 | 61.6%                              |
| Table                 | 57%                                |
| Girdle                | Medium to Slightly Thick (Faceted) |
| Culet                 | Pointed                            |
| Polish                | EXCELLENT                          |
| Symmetry              | EXCELLENT                          |
| Fluorescence          | NONE                               |
| Inscriptions(s)       | #69 LG71054925                     |

Comments:

- HEART & ARROWS
- None - No indication of post-growth
- This Laboratory Growth Diamond was created by High Pressure High Temperature (HPHT) growth process.