

INTERNATIONAL
GEMOLOGICAL
INSTITUTE

ELECTRONIC COPY

LABORATORY GROWN DIAMOND REPORT

May 28, 2025

IGI Report Number

Description

Shape and Cutting Style

Measurements

LG711504797

LABORATORY GROWN DIAMOND

ROUND BRILLIANT

12.02 - 12.06 x 7.26 mm

GRADING RESULTS

Carat Weight

Color Grade

Clarity Grade

Cut Grade

6.44 CARATS

F

VVS 2

IDEAL

ADDITIONAL GRADING INFORMATION

Polish

Symmetry

Fluorescence

Inscription(s)

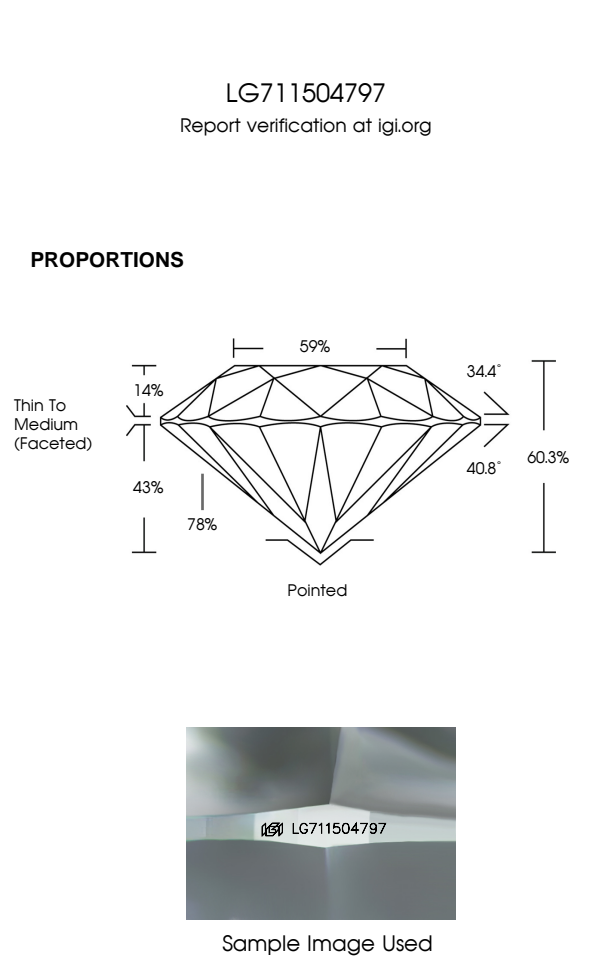
Comments: This Laboratory Grown Diamond was created by Chemical Vapor Deposition (CVD) growth process. Type IIa

EXCELLENT

EXCELLENT

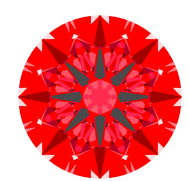
NONE

IGI LG711504797



LIGHT PERFORMANCE REPORT

Light Performance Grade: Exceptional



Ideal-Scope representation

Low

Moderate

High

Superior

Exceptional

Light Performance

Brightness

Fire

Contrast

COLOR

D

E

F

G

H

I

J

Faint

Very Light

Light

CLARITY

IF

VS¹⁻²

VS¹⁻²

SI¹⁻²

I¹⁻³

Internally Flawless

Very Very Slightly Included



Very Slightly Included


Slightly Included

Included

© IGI 2020, International Gemological Institute

FD - 10 20





May 28, 2025

IGI Report Number

Description

Shape and Cutting Style

Measurements

GRADING RESULTS

Carat Weight

Color Grade

Clarity Grade

Cut Grade

LG711504797

LABORATORY GROWN DIAMOND

ROUND BRILLIANT

12.02 - 12.06 X 7.26 MM

ADDITIONAL GRADING INFORMATION

Polish

Symmetry

Fluorescence

Inscription(s)

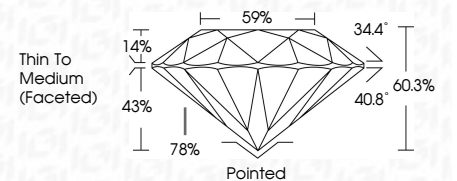
Comments: This Laboratory Grown Diamond was created by Chemical Vapor Deposition (CVD) growth process. Type IIa

EXCELLENT

EXCELLENT


NONE

IGI LG711504797



Thin To Medium (Faceted)

Pointed



IGI

May 28, 2025

IGI Report No LG711504797

ROUND BRILLIANT

12.02 - 12.06 X 7.26 MM

Carat Weight

Color Grade

Clarity Grade

Cut Grade

Depth

Table

Grade

Thin To Medium (Faceted)

Polished

Polish

Symmetry

Fluorescence

Inscription(s)

Comments: This Laboratory Grown Diamond was created by Chemical Vapor Deposition (CVD) growth process. Type IIa

6.44 CARATS

F

VVS 2

IDEAL

60.3%

59%

EXCELLENT

EXCELLENT

NONE

IGI LG711504797