



ELECTRONIC COPY

LABORATORY GROWN DIAMOND REPORT

May 27, 2025	
IGI Report Number	LG711505186
Description	LABORATORY GROWN DIAMOND
Shape and Cutting Style	ROUND BRILLIANT
Measurements	7.37 - 7.40 X 4.55 MM

GRADING RESULTS

Carat Weight	1.52 CARAT
Color Grade	D
Clarity Grade	VS 1
Cut Grade	IDEAL

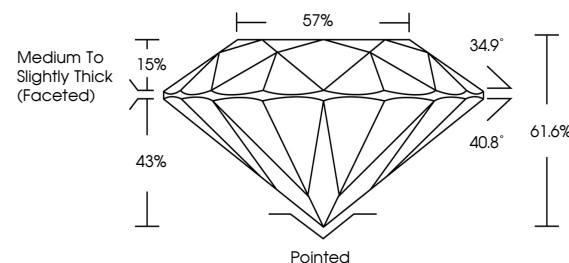
ADDITIONAL GRADING INFORMATION

Polish	EXCELLENT
Symmetry	EXCELLENT
Fluorescence	NONE
Inscription(s)	 LG711505186

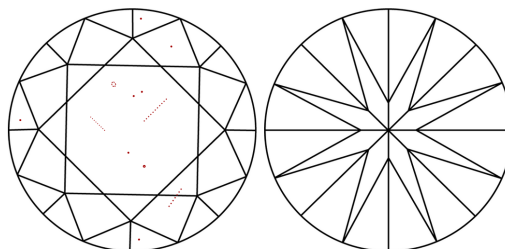
Comments: HEARTS & ARROWS
This Laboratory Grown Diamond was created by
Chemical Vapor Deposition (CVD) growth process.
Type IIa

LG711505186
Report verification at igi.org

PROPORTIONS



CLARITY CHARACTERISTICS

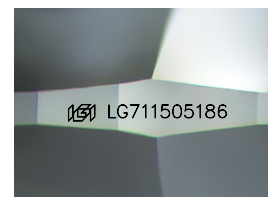


KEY TO SYMBOLS

Red symbols indicate internal characteristics.
Green symbols indicate external characteristics.



www.igi.org



Sample Image Used

COLOR

D E F G H I J Faint Very Light Light

CLARITY

IF WS¹⁻² VS¹⁻² SI¹⁻² I¹⁻³

Internally Flawless	Very Very Slightly Included	Very Slightly Included	Slightly Included	Included
------------------------	--------------------------------	---------------------------	----------------------	----------



© IGI 2020, International Gemological Institute

FD - 10 20

THIS DOCUMENT WAS PRODUCED WITH THE FOLLOWING SECURITY MEASURES: SPECIAL DOCUMENT PAPER, INK SCREENS, WATERMARK BACKGROUND DESIGNS, HOLOGRAM AND OTHER SECURITY FEATURES NOT LISTED AND DO EXCEED DOCUMENT SECURITY INDUSTRY GUIDELINES

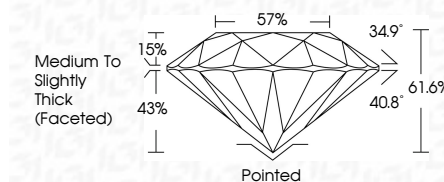
LABORATORY GROWN DIAMOND REPORT



May 27, 2025	
IGI Report Number	LG711505186
Description	LABORATORY GROWN DIAMOND
Shape and Cutting Style	ROUND BRILLIANT
Measurements	7.37 - 7.40 X 4.55 MM

GRADING RESULTS

Carat Weight	1.52 CARAT
Color Grade	D
Clarity Grade	VS 1
Cut Grade	IDEAL



ADDITIONAL GRADING INFORMATION

Polish	EXCELLENT
Symmetry	EXCELLENT
Fluorescence	NONE
Inscription(s)	LG1 LG711505186
Comments: HEARTS & ARROWS This Laboratory Grown Diamond was created by Chemical Vapor Deposition (CVD) growth process. Type IIa	



May 27, 2025
IGI Report No LG711505186
ROUND BRILLIANT

Carat Weight	1.52 CARAT
Color Grade	D
Clarity Grade	VS 1
Cut Grade	IDEAL
Depth	61.6%
Table	57%
Girdle	Medium to Slightly Thick (Faceted)
Culet	Pointed
Polish	Excellent
Symmetry	Excellent
Fluorescence	None
Report #	4561 (271) 1003104

Comments:
HEARTS & ARROWS
This Laboratory Grown Diamond was
created by Chemical Vapor Deposition
(CVD) growth process.