

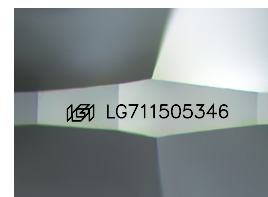
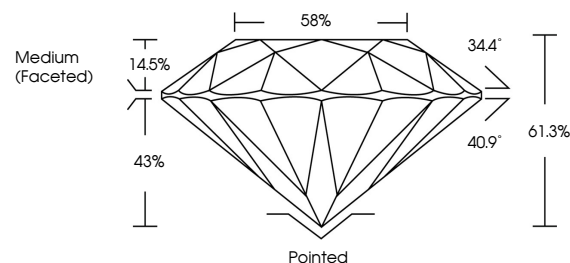


ELECTRONIC COPY

LABORATORY GROWN DIAMOND REPORT

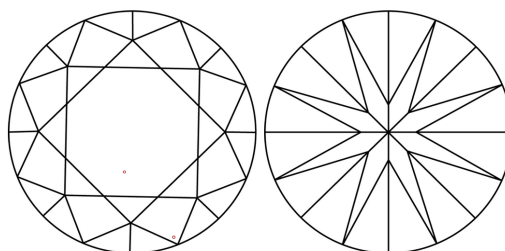
LG711505346
Report verification at igi.org

PROPORTIONS



Sample Image Used

CLARITY CHARACTERISTICS



KEY TO SYMBOLS

Red symbols indicate internal characteristics.
Green symbols indicate external characteristics.



www.igi.org

COLOR

D E F G H I J Faint Very Light Light

CLARITY

IF VWS¹⁻² VS¹⁻² SI¹⁻² I¹⁻³

Internally Flawless	Very Very Slightly Included	Very Slightly Included	Slightly Included	Included
------------------------	--------------------------------	---------------------------	----------------------	----------



© IGI 2020, International Gemological Institute

FD - 10 20

LABORATORY GROWN DIAMOND REPORT



May 27, 2025

IGI Report Number **LG711505346**Description **LABORATORY GROWN DIAMOND**Shape and Cutting Style **ROUND BRILLIANT**

Measurements 7.39 - 7.42 X 4.54 MM

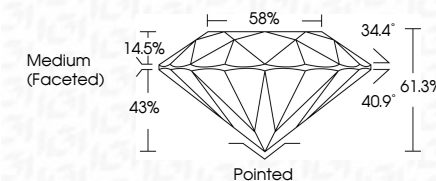
GRADING RESULTS

Carat Weight **1.52 CARAT**

Color Grade	D
-------------	---

Clarity Grade VS 1

Cut Grade **IDEAL**



ADDITIONAL GRADING INFORMATION

Polish **EXCELLENT**Symmetry **EXCELLENT**Fluorescence **NONE**Inscription(s) LG711505346

Comments: HEARTS & ARROWS

Comments: HEARTS & ARROWS
This Laboratory Grown Diamond was created by
Chemical Vapor Deposition (CVD) growth process.
Type IIa



May 27, 2025	Color Grade	1.62 CARAT
G Report No. LG71105346	Clarity Grade	VS 1
ROUND BRILLIANT	Cut Grade	IDEAL
	Depth	61.3%
	Table	88%
	Girdle	Medium (Faceted)
	Culet	Pointed
	Polish	EXCELLENT
	Symmetry	EXCELLENT
	Fluorescence	NONE
	Fluorescence(s)	(#) LG71105346
Comments: HEARTS & ARROWS This Laboratory Growth Diamond was created by Chemical Vapor Deposition (CVD) growth process. Type IIa		