



**ELECTRONIC COPY**

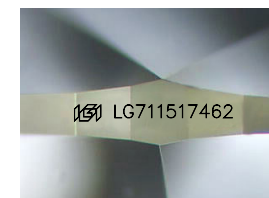
LG711517462  
Report verification at igi.org



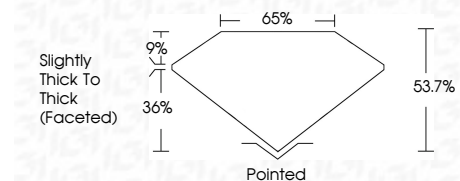
June 19, 2025  
IGI Report Number **LG711517462**  
Description **LABORATORY GROWN DIAMOND**  
Shape and Cutting Style **HEART MODIFIED BRILLIANT**  
Measurements **7.17 X 8.28 X 4.45 MM**

**GRADING RESULTS**

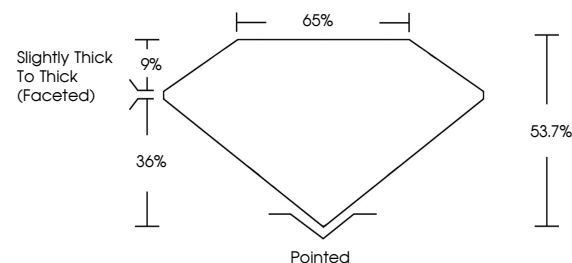
Carat Weight **2.01 CARATS**  
Color Grade **FANCY VIVID PINK**  
Clarity Grade **VS 1**



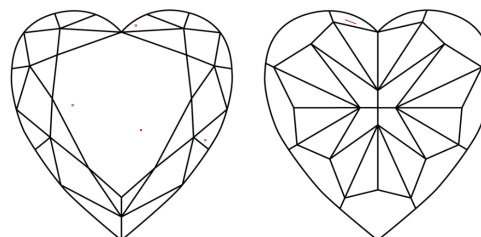
Sample Image Used



**PROPORTIONS**



**CLARITY CHARACTERISTICS**



**KEY TO SYMBOLS**

Red symbols indicate internal characteristics.  
Green symbols indicate external characteristics.

**COLOR**

D E F G H I J Faint Very Light Light

**CLARITY**

IF	VS <sup>1-2</sup>	VS <sup>1-2</sup>	SI <sup>1-2</sup>	I <sup>1-3</sup>
Internally Flawless	Very Very Slightly Included	Very Slightly Included	Slightly Included	Included

**ADDITIONAL GRADING INFORMATION**

Polish **EXCELLENT**  
Symmetry **EXCELLENT**  
Fluorescence **STRONG**  
Inscription(s) **IGI LG711517462**  
Comments: This Laboratory Grown Diamond was created by Chemical Vapor Deposition (CVD) growth process. Indications of post-growth treatment.



**IGI**



June 19, 2025  
IGI Report No LG711517462  
**HEART MODIFIED BRILLIANT**  
7.17 X 8.28 X 4.45 MM  
2.01 CARATS  
FANCY VIVID PINK  
VS 1  
63.7%  
65%  
Slightly Thick To Thick (Faceted)  
Pointed  
EXCELLENT  
EXCELLENT  
STRONG  
IGI LG711517462

Comments: This Laboratory Grown Diamond was created by Chemical Vapor Deposition (CVD) growth process. Indications of post-growth treatment.