



ELECTRONIC COPY

LABORATORY GROWN DIAMOND REPORT

June 3, 2025	
IGI Report Number	LG711530526
Description	LABORATORY GROWN DIAMOND
Shape and Cutting Style	ROUND BRILLIANT
Measurements	8.24 - 8.31 X 5.00 MM

GRADING RESULTS

Carat Weight	2.09 CARATS
Color Grade	FANCY VIVID PINK
Clarity Grade	VS 1
Cut Grade	IDEAL

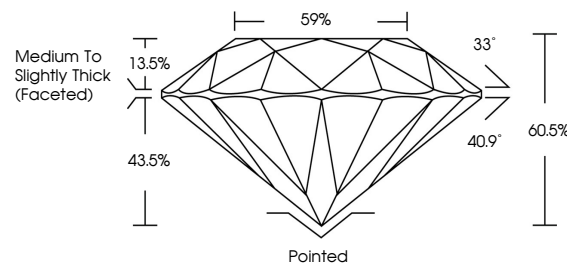
ADDITIONAL GRADING INFORMATION

Polish	EXCELLENT
Symmetry	EXCELLENT
Fluorescence	STRONG
Inscription(s)	LG711530526

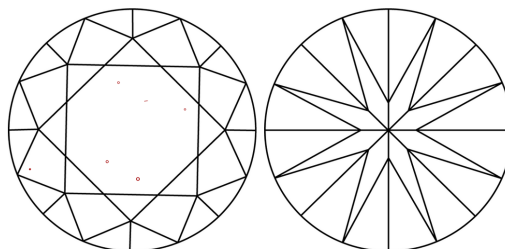
Comments: This Laboratory Grown Diamond was created by Chemical Vapor Deposition (CVD) growth process.
Indications of post-growth treatment.

LG711530526
Report verification at igi.org

PROPORTIONS

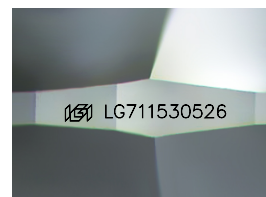


CLARITY CHARACTERISTICS



KEY TO SYMBOLS

Red symbols indicate internal characteristics.
Green symbols indicate external characteristics.



Sample Image Used

COLOR

D E F G H I J Faint Very Light Light

CLARITY

IF WS¹⁻² VS¹⁻² SI¹⁻² I¹⁻³

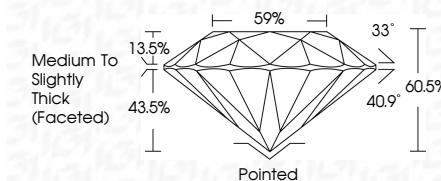
Internally Flawless	Very Very Slightly Included	Very Slightly Included	Slightly Included	Included
------------------------	--------------------------------	---------------------------	----------------------	----------



June 3, 2025	
IGI Report Number	LG711530526
Description	LABORATORY GROWN DIAMOND
Shape and Cutting Style	ROUND BRILLIANT
Measurements	8.24 - 8.31 X 5.00 MM

GRADING RESULTS

Carat Weight	2.09 CARATS
Color Grade	FANCY VIVID PINK
Clarity Grade	VS 1
Cut Grade	IDEAL



ADDITIONAL GRADING INFORMATION

Polish	EXCELLENT
Symmetry	EXCELLENT
Fluorescence	STRONG
Inscription(s)	 LG711530526

Comments: This Laboratory Grown Diamond was created by Chemical Vapor Deposition (CVD) growth process.
Indications of post-growth treatment.



© IGI 2020, International Gemological Institute

FD - 10 20

www.igi.org

THIS DOCUMENT WAS PRODUCED WITH THE FOLLOWING SECURITY MEASURES: SPECIAL DOCUMENT PAPER, INK SCREENS, WATERMARK BACKGROUND DESIGNS, HOLOGRAM AND OTHER SECURITY FEATURES NOT LISTED AND DO EXCEED DOCUMENT SECURITY INDUSTRY GUIDELINES

June 3, 2025
GI Report No LG711530526
ROUND BRILLIANT

2.24 - 2.34 x 5.00 MM	
Carat Weight	2.09 CARATS
Color Grade	FANCY VIVID PINK
Clarity Grade	VS 1
Cut Grade	IDEAL
Depth	60.05%
Table	59%
Girdle	Medium to Slightly Thick (Faceted)
Culet	Pointed
Polish	EXCELLENT
Symmetry	EXCELLENT
Fluorescence	STRONG
Identification	gem 1 C711338P24

Comments:
This Laboratory Grown Diamond was created by Chemical Vapor Deposition (CVD) growth process.