

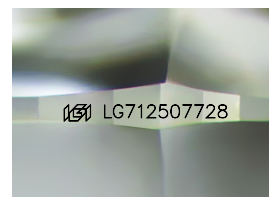
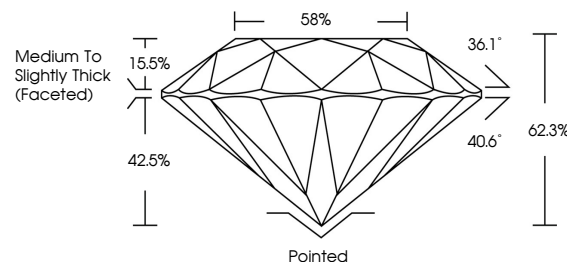


ELECTRONIC COPY

LABORATORY GROWN DIAMOND REPORT

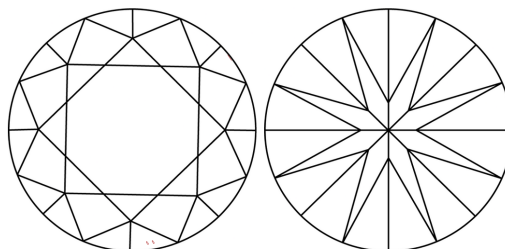
LG712507728
Report verification at lgi.org

PROPORTIONS



Sample Image Used

CLARITY CHARACTERISTICS



KEY TO SYMBOLS

Red symbols indicate internal characteristics.
Green symbols indicate external characteristics.

COLOR

D E F G H I J Faint Very Light Light

CLARITY

IF WS¹⁻² VS¹⁻² SI¹⁻² |¹⁻³

Internally Flawless	Very Very Slightly Included	Very Slightly Included	Slightly Included	Included
------------------------	--------------------------------	---------------------------	----------------------	----------



© IGI 2020, International Gemological Institute

FD - 10 20

www.igi.org

LABORATORY GROWN DIAMOND REPORT



July 11, 2025

IGI Report Number **LG712507728**Description **LABORATORY GROWN DIAMOND**Shape and Cutting Style **ROUND BRILLIANT**

Measurements 7.33 - 7.37 X 4.58 MM

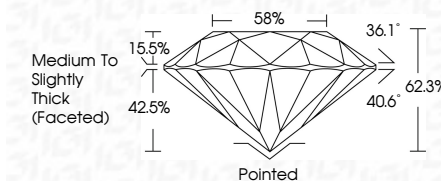
GRADING RESULTS

Carat Weight 1.54 CARAT

Color Grade D

Clarity Grade WS 2

Cut Grade **IDEAL**



ADDITIONAL GRADING INFORMATION

Polish **EXCELLENT**Symmetry **EXCELLENT**Fluorescence **NONE**Inscription(s) LG712507728

Comments: As Grown - No indication of post-growth treatment.

This Laboratory Grown Diamond was created by High Pressure High Temperature (HPHT) growth process.

Type II



IG

July 11, 2025	1.54 CARAT	D	VVS 2	Polished	None	1691.671220728	<p>Comments:</p> <p>to be grown - No indication of post-growth treatment.</p> <p>This Laboratory Grown Diamond was created by High Pressure High Temperature (HPHT) growth process.</p> <p>Type II</p>
G Report No. LG71380728	Color Weight	Color Grade	Clarity Grade	Clarity	Polish		
ROUND BRILLIANT	33 - 33 X 4.58 MM		Color Grade	Depth	Symmetry		
			Clarity	Table	Fluorescence		
			Grade	Medium to Slightly Medium (focused)	Engravings(s)		