

ELECTRONIC COPY

LABORATORY GROWN DIAMOND REPORT

| | |
|-------------------------|--------------------------|
| July 2, 2025 | |
| IGI Report Number | LG712511711 |
| Description | LABORATORY GROWN DIAMOND |
| Shape and Cutting Style | ROUND BRILLIANT |
| Measurements | 7.41 - 7.46 X 4.64 MM |

GRADING RESULTS

| | |
|---------------|------------|
| Carat Weight | 1.58 CARAT |
| Color Grade | D |
| Clarity Grade | VS 1 |
| Cut Grade | IDEAL |

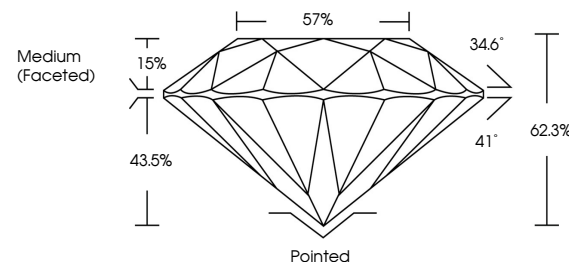
ADDITIONAL GRADING INFORMATION

| | |
|----------------|-----------------|
| Polish | EXCELLENT |
| Symmetry | EXCELLENT |
| Fluorescence | NONE |
| Inscription(s) | 151 LG712511711 |

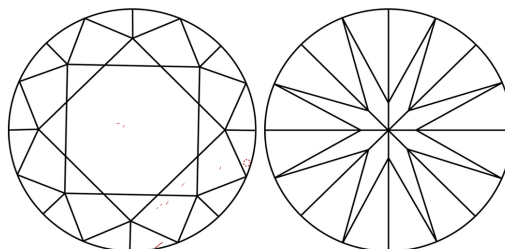
Comments: As Grown - No indication of post-growth treatment.
This Laboratory Grown Diamond was created by High Pressure High Temperature (HPHT) growth process.
Type II

LG712511711
Report verification at lgi.org

PROPORTIONS

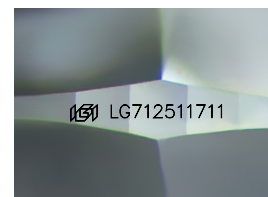


CLARITY CHARACTERISTICS



KEY TO SYMBOLS

Red symbols indicate internal characteristics.
Green symbols indicate external characteristics.



Sample Image Used

COLOR

D E F G H I J Faint Very Light Light

CLARITY

IF WS¹⁻² VS¹⁻² SI¹⁻² I¹⁻³

| Internally Flawless | Very Very Slightly Included | Very Slightly Included | Slightly Included | Included |
|------------------------|--------------------------------|---------------------------|----------------------|----------|
|------------------------|--------------------------------|---------------------------|----------------------|----------|

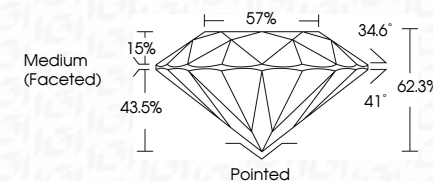
LABORATORY GROWN DIAMOND REPORT



| | |
|-------------------------|--------------------------|
| July 2, 2025 | |
| IGI Report Number | LG712511711 |
| Description | LABORATORY GROWN DIAMOND |
| Shape and Cutting Style | ROUND BRILLIANT |
| Measurements | 7.41 - 7.46 X 4.64 MM |

GRADING RESULTS

| | |
|---------------|------------|
| Carat Weight | 1.58 CARAT |
| Color Grade | D |
| Clarity Grade | VS 1 |
| Cut Grade | IDEAL |



ADDITIONAL GRADING INFORMATION

| | |
|--|--|
| Polish | EXCELLENT |
| Symmetry | EXCELLENT |
| Fluorescence | NONE |
| Inscription(s) |  LG71251171 |
| Comments: As Grown - No indication of post-growth treatment. | |
| This Laboratory Grown Diamond was created by High Pressure High Temperature (HPHT) growth process. | |
| Type II | |



© IGI 2020, International Gemological Institute

FD - 10 20

July 2, 2025
GI Report No LG712511711
ROUND BRILLIANT

| | | |
|-----------------|-----------------------|------------------|
| ROUND BRILLIANT | 4.41 - 7.46 X 4.64 MM | 1.58 CARAT |
| Color | Weight | D |
| Grade | Grade | VS 1 |
| Clarity | Grade | IDEAL |
| Depth | Grade | 62.5% |
| Table | Grade | 57% |
| Grade | Grade | Medium (faceted) |
| Culet | Grade | Pointed |
| Polish | Grade | EXCELLENT |
| Symmetry | Grade | EXCELLENT |
| Fluorescence | Grade | NONE |

Comments:
As Grown - No indication of post-growth treatment