

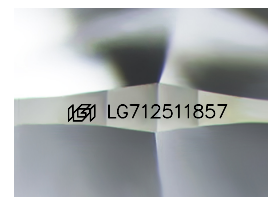
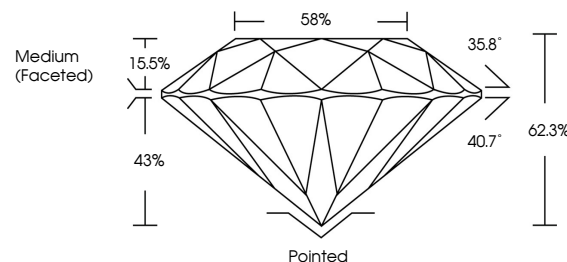


**ELECTRONIC COPY**

## LABORATORY GROWN DIAMOND REPORT

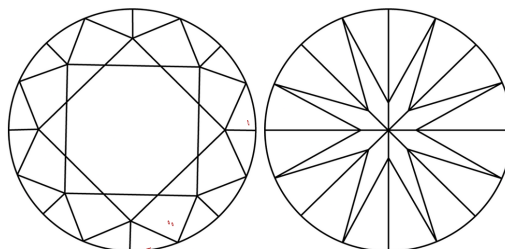
LG712511857  
Report verification at [igi.org](https://igi.org)

## PROPORTIONS



Sample Image Used

## CLARITY CHARACTERISTICS



### KEY TO SYMBOLS

Red symbols indicate internal characteristics.  
Green symbols indicate external characteristics.

## COLOR

D E F G H I J Faint Very Light Light

## CLARITY

IF      WS<sup>1-2</sup>      VS<sup>1-2</sup>      S<sup>1-2</sup>      |<sup>1-3</sup>

Internally Flawless	Very Very Slightly Included	Very Slightly Included	Slightly Included	Included
------------------------	--------------------------------	---------------------------	----------------------	----------



© IGI 2020, International Gemological Institute

FD - 10 20

**www.igi.org**

## LABORATORY GROWN DIAMOND REPORT



July 1, 2025

IGI Report Number **LG712511857**Description **LABORATORY GROWN DIAMOND**Shape and Cutting Style **ROUND BRILLIANT**

Measurements 7.42 - 7.45 X 4.63 MM

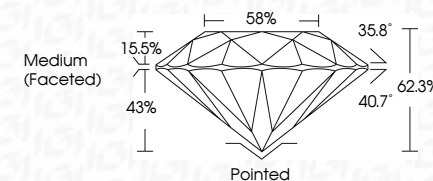
## GRADING RESULTS

Carat Weight 1.59 CARAT

Color Grade D

Clarity Grade VS 1

Cut Grade **IDEAL**



### ADDITIONAL GRADING INFORMATION

Polish **EXCELLENT**Symmetry **EXCELLENT**Fluorescence **NONE**Inscription(s)  LG712511857

Comments: As Grown - No indication of post-growth treatment.

This Laboratory Grown Diamond was created by High Pressure High Temperature (HPHT) growth process.

Type II



<div>  </div>	<div> <p>1.59 CARAT</p> <p>D</p> <p>VS 1</p> <p>IDEAL</p> <p>62.5%</p> <p>58%</p> <p>Medium (Faceted)</p> <p>Pointed</p> <p>EXCELLENT</p> <p>EXCELLENT</p> <p>NONE</p> <p>gsm GSY12611857</p> </div>
<div> <p>1.59 CARAT</p> <p>D</p> <p>VS 1</p> <p>IDEAL</p> <p>62.5%</p> <p>58%</p> <p>Medium (Faceted)</p> <p>Pointed</p> <p>EXCELLENT</p> <p>EXCELLENT</p> <p>NONE</p> <p>gsm GSY12611857</p> </div>	<div> <p>1.59 CARAT</p> <p>D</p> <p>VS 1</p> <p>IDEAL</p> <p>62.5%</p> <p>58%</p> <p>Medium (Faceted)</p> <p>Pointed</p> <p>EXCELLENT</p> <p>EXCELLENT</p> <p>NONE</p> <p>gsm GSY12611857</p> </div>